



ORDINANCE NO. 02 112

AN ORDINANCE AMENDING THE STATE LAND USE BOUNDARIES MAP, H-7 FOR THE COUNTY OF HAWAII, BY CHANGING THE DISTRICT CLASSIFICATION FROM THE AGRICULTURAL TO THE URBAN DISTRICT AT HIENALOLI 2ND, NORTH KONA, HAWAII, COVERED BY TAX MAP KEY 7-5-10:PORTION OF 65.

BE IT ORDAINED BY THE COUNCIL OF THE COUNTY OF HAWAII:

SECTION 1. The State Land Use Boundaries Map, H-7 for the County of Hawaii, is amended to change the district classification of property described hereinafter as follows:

The district classification of the following area situated at Hienaloli 2nd, North Kona, Hawaii, shall be Urban:

Beginning at the Northeasterly corner of this parcel of land, being also the Northwesterly corner of Lot 2 of this subdivision and being a point on the Southerly boundary of Lot 1-B as shown on CSF 16687 (Government Land, State of Hawaii), the coordinates of said point of beginning referred to Government Survey Triangulation Station "KAHELO" being 7,399.75 feet North and 2,486.05 feet East and running by azimuths measured clockwise from True South:

1. 306° 19' 485.84 feet along Lot 2 of this subdivision and along the remainder of Land Commission Award 7716, Apana 5 to R. Keelikolani to a point;

Thence, for the next thirty-nine (39) courses following along middle of stonewall and along Royal Patent 1600 and 1930, Land Commission Award 387, Part 4, Section 2 to American Board of Commissioners for Foreign Missions:

Thence, for the next six (6) courses following along the Northerly side of Lot 15 (Roadway) of Kealoha, Increment 1:

2. 86° 27' 31.67 feet to a point;
3. 74° 35' 37.57 feet to a point;

- | | | | |
|----|---------|-------|--|
| 4. | 76° 26' | 25.90 | feet to a point; |
| 5. | 83° 19' | 56.85 | feet to a point; |
| 6. | 85° 50' | 38.95 | feet to a point; |
| 7. | 80° 04' | 60.32 | feet to a point; |
| 8. | 93° 23' | 44.02 | feet along middle of stonewall, along the Northerly side of Lot 15 (Roadway) of Kealoha, Increment 1, along Royal Patent 1600 and 1930, Land Commission Award 387, Part 4, Section 2 to American Board of Commissioners for Foreign Missions and along the Northerly end of Kawena Street to a point; |
| 9. | 79° 50' | 55.85 | feet along middle of stonewall, along the Northerly end of Kawena Street, along the Northerly side of Lot 17 (Roadway) of Kealoha, Increment 1, and along Royal Patent 1600 and 1930, Land Commission Award 387, Part 4, Section 2 to American Board of Commissioners for Foreign Missions to a point; |

Thence, for the next fifteen (15) courses following along middle of stonewall, along the Northerly side of Lot 17 (Roadway) of Kealoha, Increment 1 and along Royal Patent 1600 and 1930, Land Commission Award 387, Part 4, Section 2 to American Board of Commissioners for Foreign Missions:

- | | | | |
|-----|---------|-------|------------------|
| 10. | 81° 03' | 77.45 | feet to a point; |
| 11. | 78° 38' | 60.92 | feet to a point; |
| 12. | 84° 23' | 44.70 | feet to a point; |
| 13. | 83° 28' | 39.75 | feet to a point; |
| 14. | 75° 25' | 19.34 | feet to a point; |
| 15. | 48° 35' | 7.65 | feet to a point; |
| 16. | 88° 47' | 8.67 | feet to a point; |

17.	68° 08'	44.28	feet to a point;
18.	72° 32'	36.26	feet to a point;
19.	76° 07'	46.80	feet to a point;
20.	75° 08'	26.25	feet to a point;
21.	83° 59'	56.21	feet to a point;
22.	69° 49'	19.95	feet to a point;
23.	79° 31'	35.03	feet to a point;
24.	70° 54'	17.72	feet to a point;
25.	58° 42'	25.70	feet along middle of stonewall, along the Northerly side of Lot 17 (Roadway) and Lot 1 of Kealoha, Increment 1 and along Royal Patent 1600 and 1930, Land Commission Award 387, Part 4, Section 2 to American Board of Commissioners for Foreign Missions to a point;

Thence, for the next fifteen (15) courses, following along the middle of stonewall, along Lot 1 of Kealoha, Increment 1 and along Royal Patent 1600 and 1930, Land Commission Award 387, Part 4, Section 2 to American Board of Commissioners for Foreign Missions:

26.	73° 26'	15.34	feet to a point;
27.	91° 14'	40.89	feet to a point;
28.	10° 29'	9.33	feet to a point;
29.	70° 59'	43.63	feet to a point;
30.	78° 51'	32.80	feet to a point;
31.	72° 11'	17.66	feet to a point;
32.	75° 47'	18.48	feet to a point;
33.	61° 56'	12.09	feet to a point;

34.	94°	43'	10.20	feet to a point;
35.	78°	04'	63.92	feet to a point;
36.	85°	03'	16.09	feet to a point;
37.	73°	52'	40.16	feet to a point;
38.	82°	16'	8.44	feet to a point;
39.	55°	40'	9.82	feet to a point;
40.	75°	07'	26.04	feet to a point;

Thence, following along the Easterly side of Hawaii Belt Road (F.A.P. 11A-03-69) (Queen Kaahumanu Highway) on a curve to the left with a radius of 4,961.07 feet, the chord azimuth and distance being:

41.	138°	07'	51"	459.18	feet to a point;
-----	------	-----	-----	--------	------------------

Thence, for the next eleven (11) courses following along Lot 1-B as shown on CSF 16687 (Government Land, State of Hawaii):

42.	247°	00'	11"	104.60	feet to a point;
43.	266°	15'	11"	138.00	feet to a point;
44.	276°	10'	11"	112.00	feet to a point;
45.	237°	00'	11"	25.00	feet to a point;
46.	270°	00'	11"	79.00	feet to a point;
47.	255°	30'	11"	138.00	feet to a point;
48.	262°	00'	11"	185.00	feet to a point;
49.	245°	20'	11"	81.00	feet to a point;
50.	267°	00'	11"	128.00	feet to a point;
51.	240°	00'	11"	66.00	feet to a point;


52. 261° 40' 11" 135.01 feet to the point of beginning and containing an area of 9.746 Acres.

All as shown on the map attached hereto, marked Exhibit "A" and by reference made a part hereof.

SECTION 2. In the event that any portion of this ordinance is declared invalid, such invalidity shall not affect the other parts of this ordinance.

SECTION 3. This ordinance shall take effect upon its approval.

INTRODUCED BY:

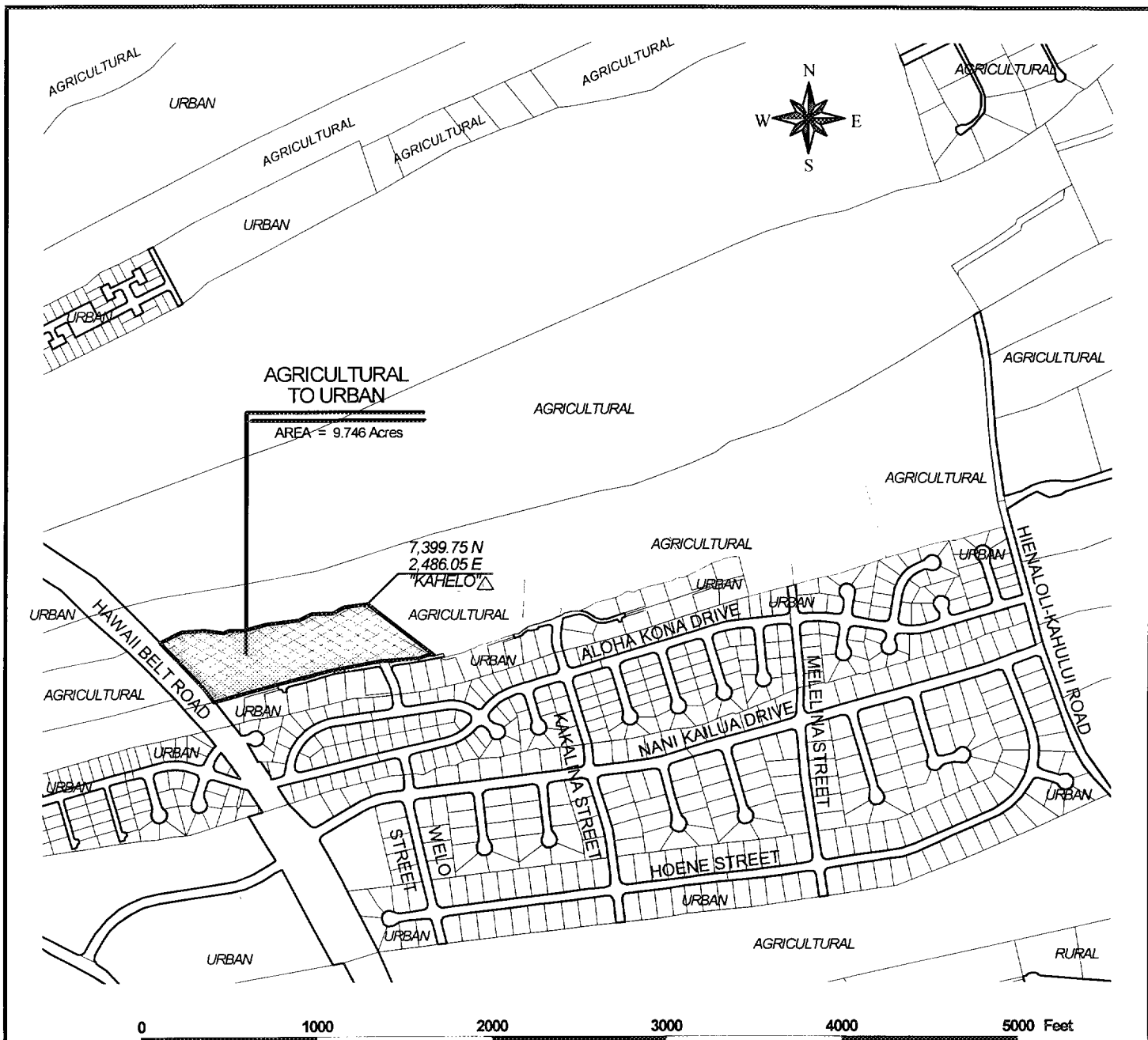


COUNCIL MEMBER, COUNTY OF HAWAII

_____ Hilo _____, Hawaii

Date of Introduction: August 28, 2002
Date of 1st Reading: August 28, 2002
Date of 2nd Reading: September 11, 2002
Effective Date: September 25, 2002

REFERENCE: Comm. 674



AMENDMENT TO STATE LAND USE BOUNDARIES MAP

AMENDING THE STATE LAND USE BOUNDARIES MAP, H-7 FOR THE COUNTY OF HAWAII,
BY CHANGING THE DISTRICT CLASSIFICATION FROM
THE AGRICULTURAL TO THE URBAN DISTRICT
AT HIENALOLI 1st & 2nd, NORTH KONA, HAWAII.

PREPARED BY: PLANNING DEPARTMENT
COUNTY OF HAWAII

OFFICE OF THE COUNTY CLERK

County of Hawaii

Hilo, Hawaii

Introduced By: Bobby-Jean Leithead-Todd
 Date Introduced: August 28, 2002
 First Reading: August 28, 2002
 Published: N/A

REMARKS: _____

Second Reading: September 11, 2002
 To Mayor: September 17, 2002
 Returned: September 25, 2002
 Effective: September 25, 2002
 Published: October 9, 2002

REMARKS: _____

ROLL CALL VOTE				
	AYES	NOES	ABS	EX
Arakaki	X			
Chung			X	
Elarionoff	X			
Jacobson		X		
Leithead-Todd	X			
Pisicchio	X			
Safarik	X			
Tyler	X			
Yagong	X			
	7	1	1	0



ROLL CALL VOTE				
	AYES	NOES	ABS	EX
Arakaki	X			
Chung	X			
Elarionoff			X	
Jacobson		X		
Leithead-Todd	X			
Pisicchio	X			
Safarik			X	
Tyler	X			
Yagong			X	
	5	1	3	0

I DO HEREBY CERTIFY that the foregoing BILL was adopted by the County Council published as indicated above.

APPROVED AS TO
FORM AND LEGALITY:


 DEPUTY CORPORATION COUNSEL
 COUNTY OF HAWAII


Date 9/24/02


 COUNCIL CHAIRMAN

 COUNTY CLERK

Bill No.: 231
 Reference: C-674/PC-100
 Ord No.: 02 112

Approved/Disapproved this 25th day

09 September, 2002


 MAYOR, COUNTY OF HAWAII