

MAP SHOWING

PORTIONS OF THE FOLLOWING:

- Grant 187 to M. Greenwell; Grant 188 to Sam Henderson;
- Grant 189 to Rebecca Grant 190 to M. Greenwell;
- Grant 191 to Rebecca; Grant 192 to M. Greenwell;
- Grant 193 to Rebecca; Grant 194 to John Greenwell;
- Grant 195 to John; Grant 196 to John;
- Grant 197 to John; Grant 198 to John Greenwell;
- Grant 199 to J. H. Henderson;
- Grant 200 to John O. Greenwell on a portion of Land Commission maps 201, Part A, Section 2 of American Grant of Commissioners for Foreign Missions; and
- Grant 202 to J. H. Henderson;
- Grant 203 to J. H. Henderson;
- Grant 204 to J. H. Henderson;
- Grant 205 to J. H. Henderson;
- Grant 206 to J. H. Henderson;
- Grant 207 to J. H. Henderson;
- Grant 208 to J. H. Henderson;
- Grant 209 to J. H. Henderson;
- Grant 210 to J. H. Henderson;
- Grant 211 to J. H. Henderson;
- Grant 212 to J. H. Henderson;
- Grant 213 to J. H. Henderson;
- Grant 214 to J. H. Henderson;
- Grant 215 to J. H. Henderson;
- Grant 216 to J. H. Henderson;
- Grant 217 to J. H. Henderson;
- Grant 218 to J. H. Henderson;
- Grant 219 to J. H. Henderson;
- Grant 220 to J. H. Henderson;
- Grant 221 to J. H. Henderson;
- Grant 222 to J. H. Henderson;
- Grant 223 to J. H. Henderson;
- Grant 224 to J. H. Henderson;
- Grant 225 to J. H. Henderson;
- Grant 226 to J. H. Henderson;
- Grant 227 to J. H. Henderson;
- Grant 228 to J. H. Henderson;
- Grant 229 to J. H. Henderson;
- Grant 230 to J. H. Henderson;
- Grant 231 to J. H. Henderson;
- Grant 232 to J. H. Henderson;
- Grant 233 to J. H. Henderson;
- Grant 234 to J. H. Henderson;
- Grant 235 to J. H. Henderson;
- Grant 236 to J. H. Henderson;
- Grant 237 to J. H. Henderson;
- Grant 238 to J. H. Henderson;
- Grant 239 to J. H. Henderson;
- Grant 240 to J. H. Henderson;
- Grant 241 to J. H. Henderson;
- Grant 242 to J. H. Henderson;
- Grant 243 to J. H. Henderson;
- Grant 244 to J. H. Henderson;
- Grant 245 to J. H. Henderson;
- Grant 246 to J. H. Henderson;
- Grant 247 to J. H. Henderson;
- Grant 248 to J. H. Henderson;
- Grant 249 to J. H. Henderson;
- Grant 250 to J. H. Henderson;
- Grant 251 to J. H. Henderson;
- Grant 252 to J. H. Henderson;
- Grant 253 to J. H. Henderson;
- Grant 254 to J. H. Henderson;
- Grant 255 to J. H. Henderson;
- Grant 256 to J. H. Henderson;
- Grant 257 to J. H. Henderson;
- Grant 258 to J. H. Henderson;
- Grant 259 to J. H. Henderson;
- Grant 260 to J. H. Henderson;
- Grant 261 to J. H. Henderson;
- Grant 262 to J. H. Henderson;
- Grant 263 to J. H. Henderson;
- Grant 264 to J. H. Henderson;
- Grant 265 to J. H. Henderson;
- Grant 266 to J. H. Henderson;
- Grant 267 to J. H. Henderson;
- Grant 268 to J. H. Henderson;
- Grant 269 to J. H. Henderson;
- Grant 270 to J. H. Henderson;
- Grant 271 to J. H. Henderson;
- Grant 272 to J. H. Henderson;
- Grant 273 to J. H. Henderson;
- Grant 274 to J. H. Henderson;
- Grant 275 to J. H. Henderson;
- Grant 276 to J. H. Henderson;
- Grant 277 to J. H. Henderson;
- Grant 278 to J. H. Henderson;
- Grant 279 to J. H. Henderson;
- Grant 280 to J. H. Henderson;
- Grant 281 to J. H. Henderson;
- Grant 282 to J. H. Henderson;
- Grant 283 to J. H. Henderson;
- Grant 284 to J. H. Henderson;
- Grant 285 to J. H. Henderson;
- Grant 286 to J. H. Henderson;
- Grant 287 to J. H. Henderson;
- Grant 288 to J. H. Henderson;
- Grant 289 to J. H. Henderson;
- Grant 290 to J. H. Henderson;
- Grant 291 to J. H. Henderson;
- Grant 292 to J. H. Henderson;
- Grant 293 to J. H. Henderson;
- Grant 294 to J. H. Henderson;
- Grant 295 to J. H. Henderson;
- Grant 296 to J. H. Henderson;
- Grant 297 to J. H. Henderson;
- Grant 298 to J. H. Henderson;
- Grant 299 to J. H. Henderson;
- Grant 300 to J. H. Henderson;

Surveyed by
 J. H. Henderson
 Surveyor
 State of Texas
 Commission Expires 12/31/1900
 No. 1000 1000000



Surveyed by
 J. H. Henderson
 Surveyor
 State of Texas
 Commission Expires 12/31/1900
 No. 1000 1000000

EXHIBIT "A"

THIS IS A REDUCED MAP

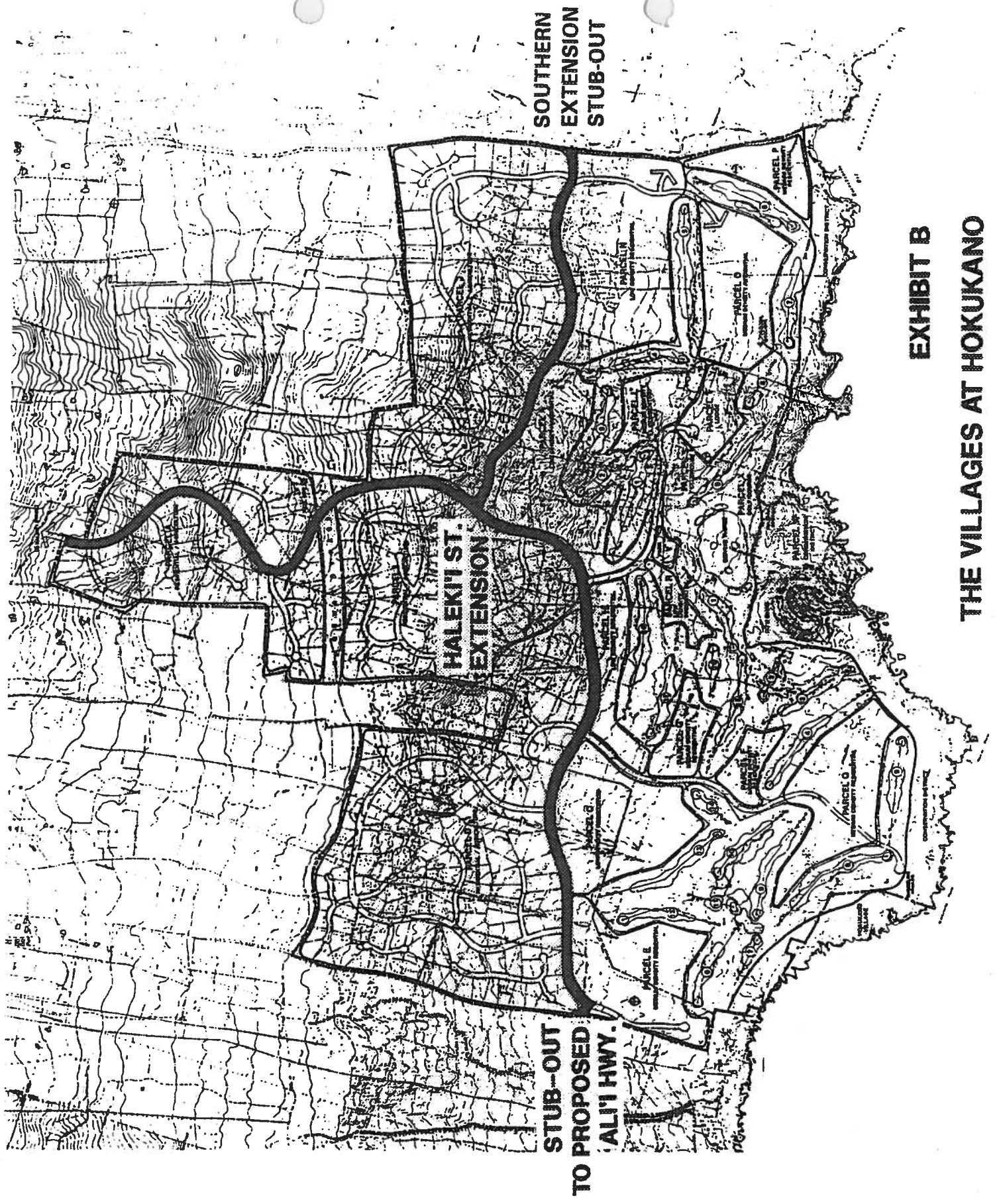
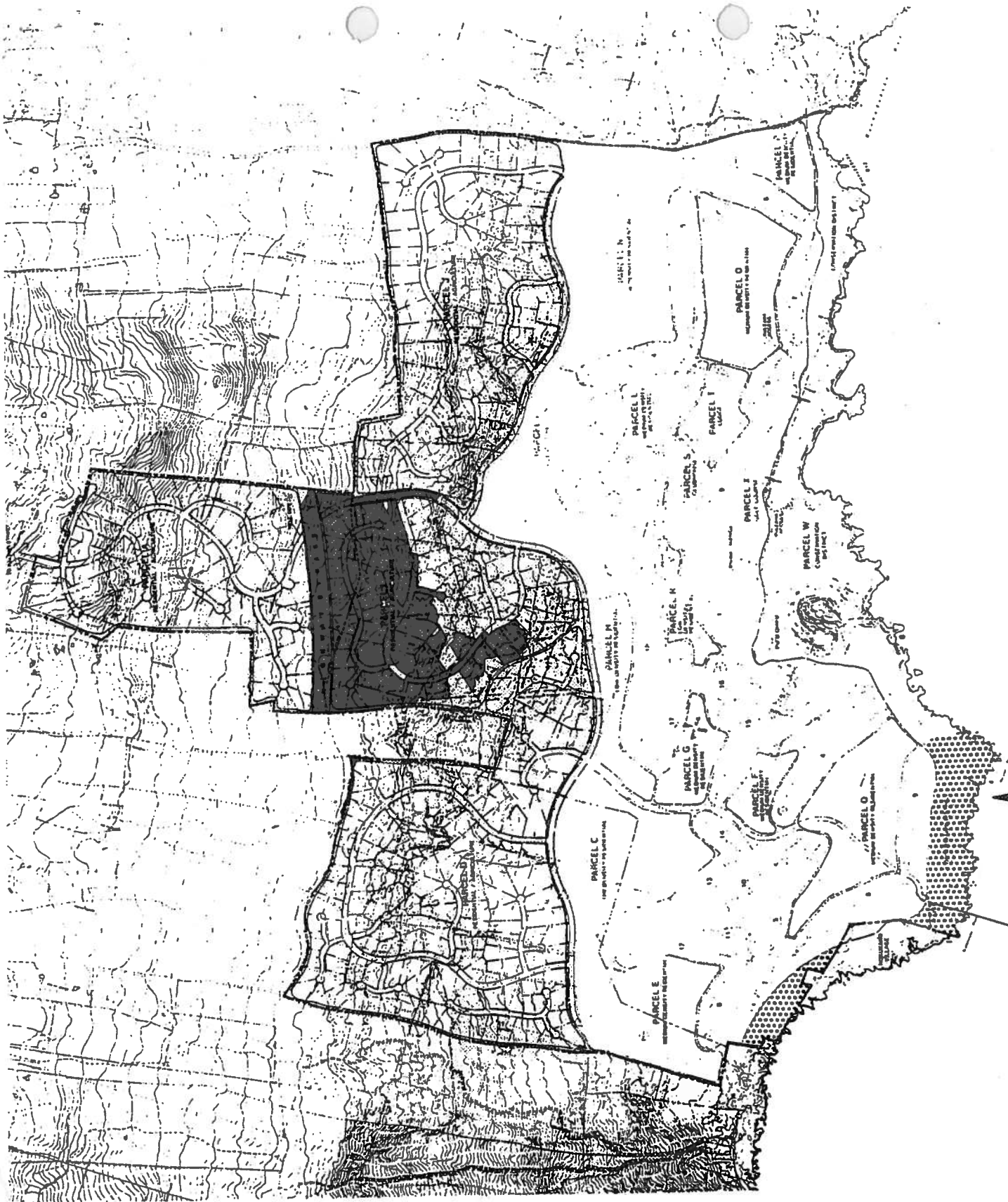


EXHIBIT B
THE VILLAGES AT HOKUKANO



25% of the Total
Park Area

Shoreline Access