

ISLAND OF HAWAII
NOT TO SCALE

STATE OF HAWAII
DEPARTMENT OF LAND AND NATURAL RESOURCES
ENGINEERING BRANCH, LAND DIVISION
FOR

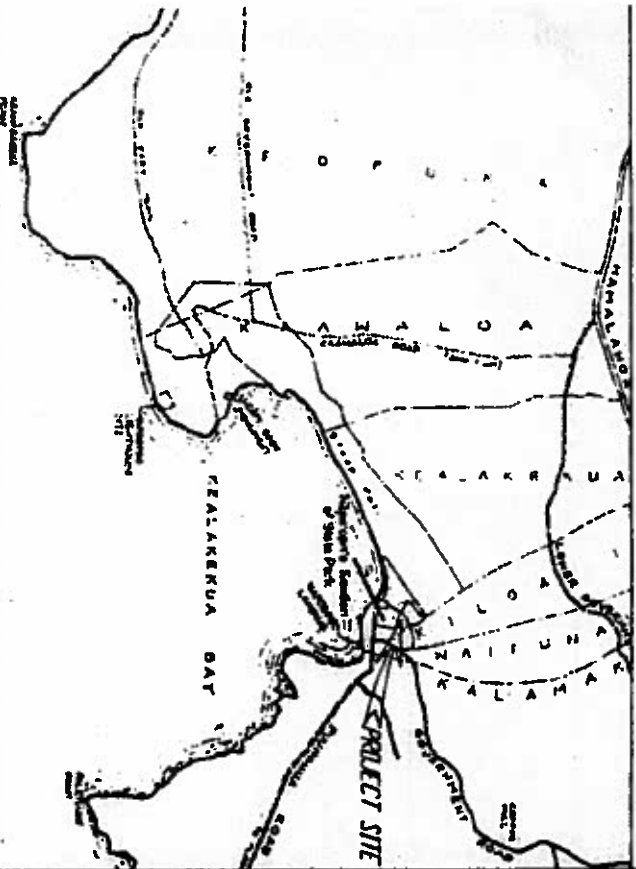
DIVISION OF STATE PARKS
JOB NO. 89-HP-F2

KEALAKEKUA BAY STATE HISTORICAL PARK
PHASE I DEVELOPMENT
KEALAKEKUA, HAWAII, HAWAII

T.M.K.: 3-8-2-04:09
ACT 328, SLH 1997

LOCATION MAP

NOT TO SCALE



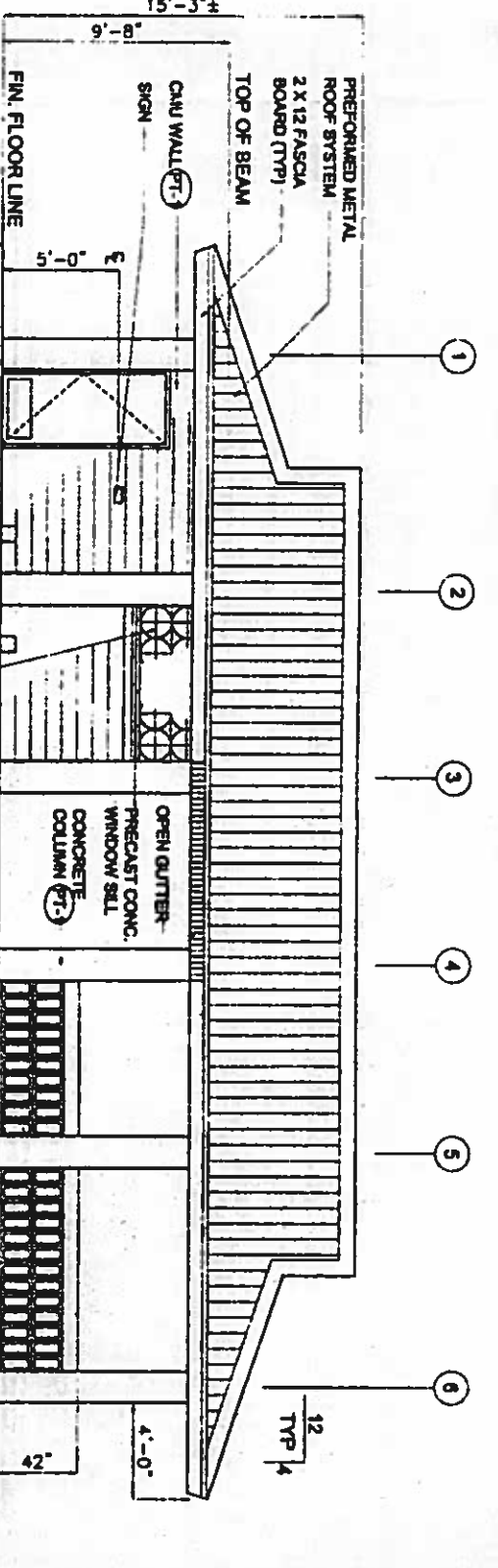
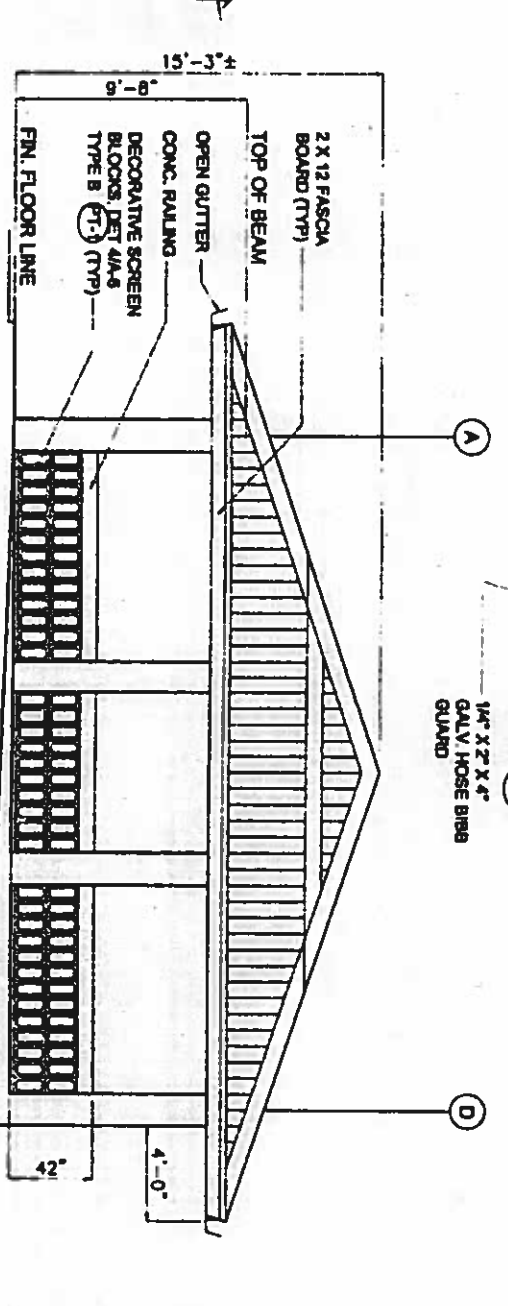
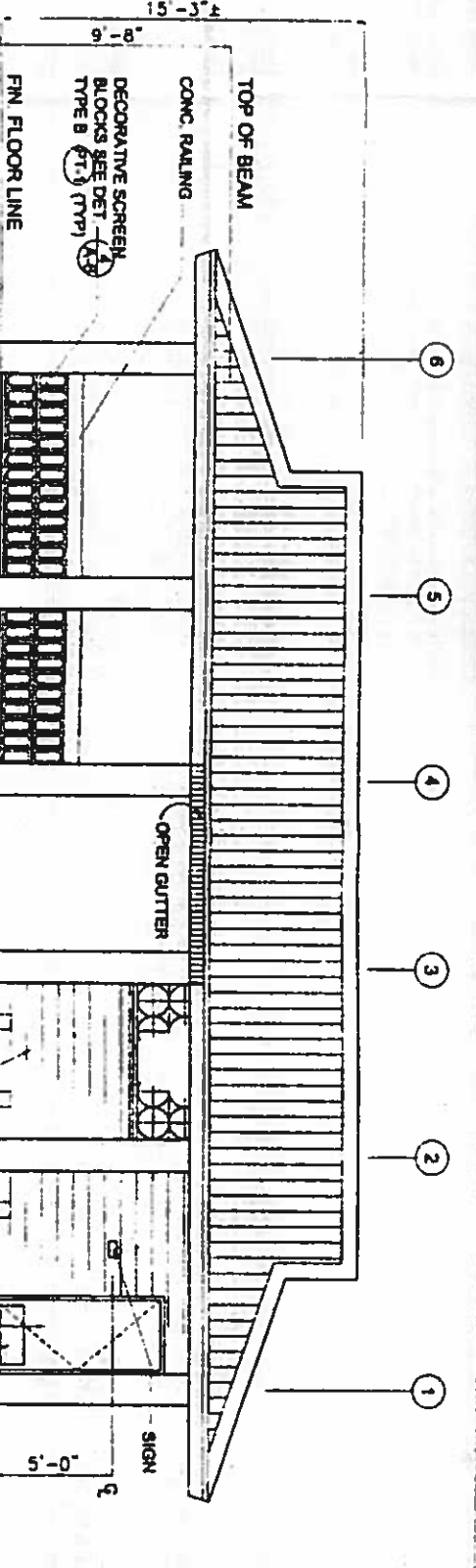
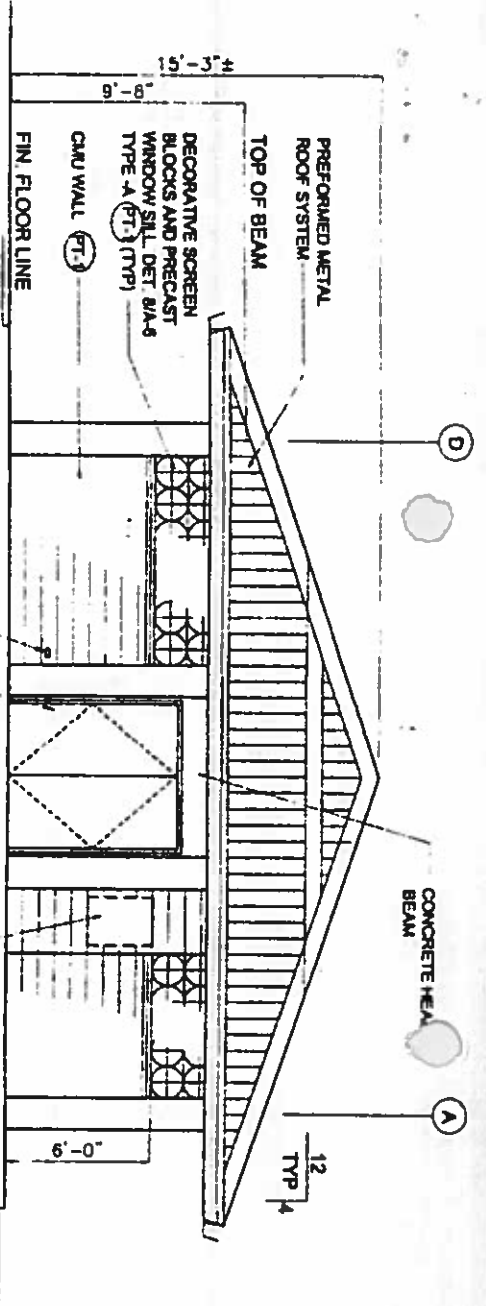
INDEX TO DRAWINGS

SHEET NO.	DRAWING NO.	DESCRIPTION	SHEET NO.	DRAWING NO.	DESCRIPTION
1	C-1	TITLE SHEET	19	E-1	ELECTRICAL SYMBOLS, DEMOLITION NOTES, SINGLE LINE DIAGRAM, PANELBOARD SCHEDULE
2	C-1	GRADING, SITE AND UTILITY PLAN	20	E-2	ELECTRICAL SITE PLAN
3	C-2	DETAILS	21	E-3	ELECTRICAL PLAN, LUMINAIRE DETAILS, NIGHT LIGHT, LIGHT DIAGRAM, METER SOCKET/ MAIN BREAKER DETAIL
4	C-3	SEWER SYSTEM DETAILS & BORING LOG			
5	A-1	FLOOR AND SLAB FINISH PLANS			
6	A-2	CEILING AND ROOF PLANS			
7	A-3	EXTERIOR ELEVATIONS			
8	A-4	INTERIOR ELEVATIONS AND DETAILS			
9	A-5	SCHEDULES AND DETAILS			
10	A-6	DETAILS			
11	A-7	BAR-B-Q-STAND			
12	A-8	SHOWER TREE ELEVATION, SECTION AND DETAILS			
13	S-1	GENERAL NOTES AND TYPICAL DETAILS			
14	S-2	FLOOR PLAN AND SECTIONS			
15	S-3	ROOF FRAMING PLAN AND SECTIONS			
16	S-4	TRUSS ELEVATIONS, BEAM ELEVATION, SECTION			
17	P-1	SITE PLUMBING PLAN, DETAILS, NOTES			
18	P-2	PLUMBING PLAN, DIAGRAM, NOTES, LEGEND AND DETAILS			

APPROVALS

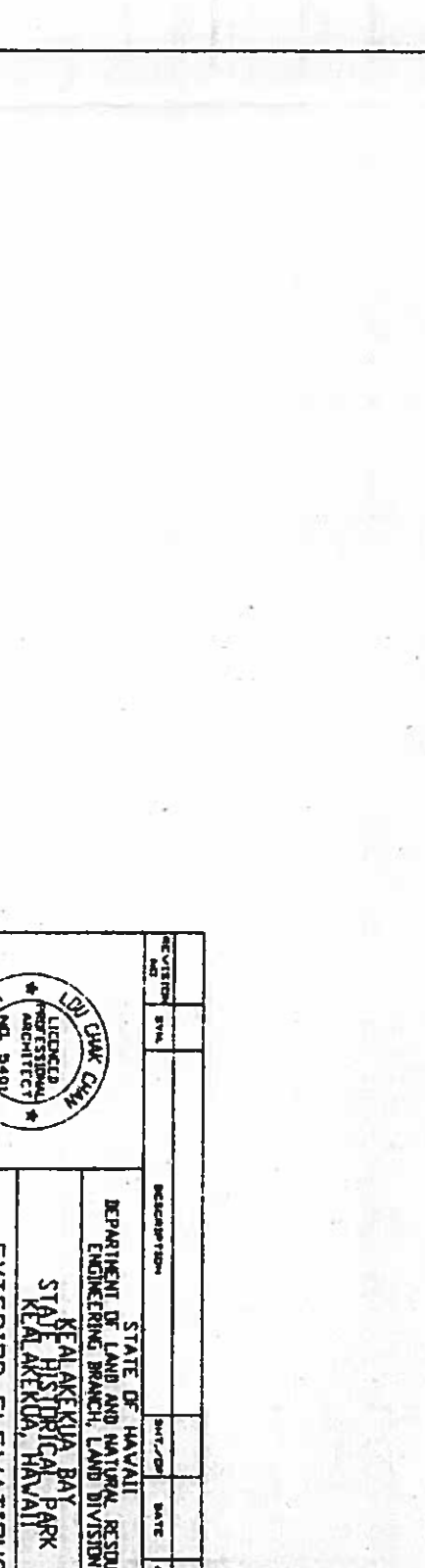
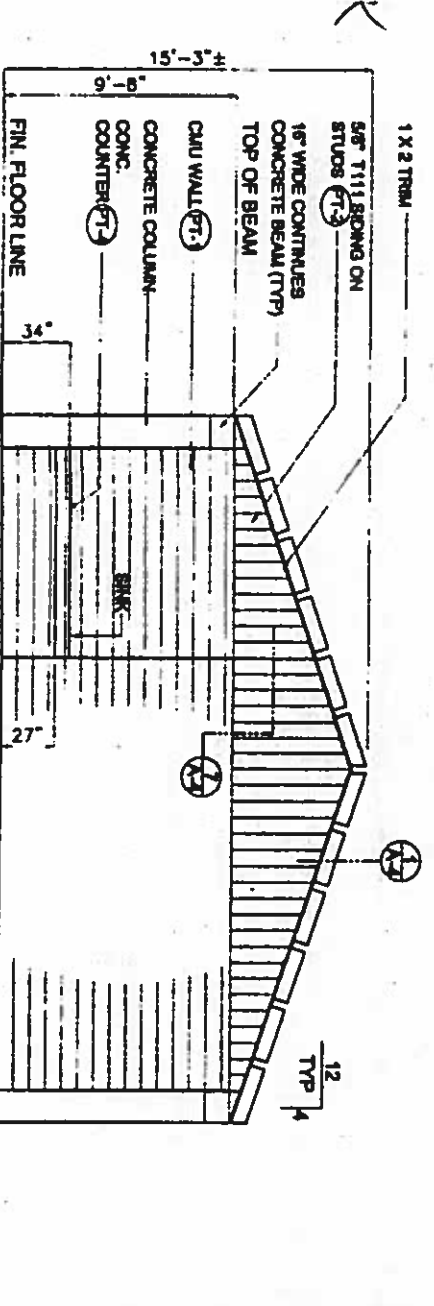
APPROVED: *Ralston H. Nagata* DATE: 5/24/00
 RALSTON H. NAGATA
 ADMINISTRATOR
 DIVISION OF STATE PARKS
 DEPARTMENT OF LAND AND NATURAL RESOURCES

APPROVED: *Andrew M. Washburn* DATE: 5/24/00
 ANDREW M. WASHBURN, P.E.
 CHIEF ENGINEER
 ENGINEERING BRANCH, LAND DIVISION
 DEPARTMENT OF LAND AND NATURAL RESOURCES



EXTERIOR ELEVATIONS

SCALE 1/4" = 1'-0" 7



ELEVATION INSIDE PAVILION CONDITION AT COUNTER

SCALE 1/4" = 1'-0" 7

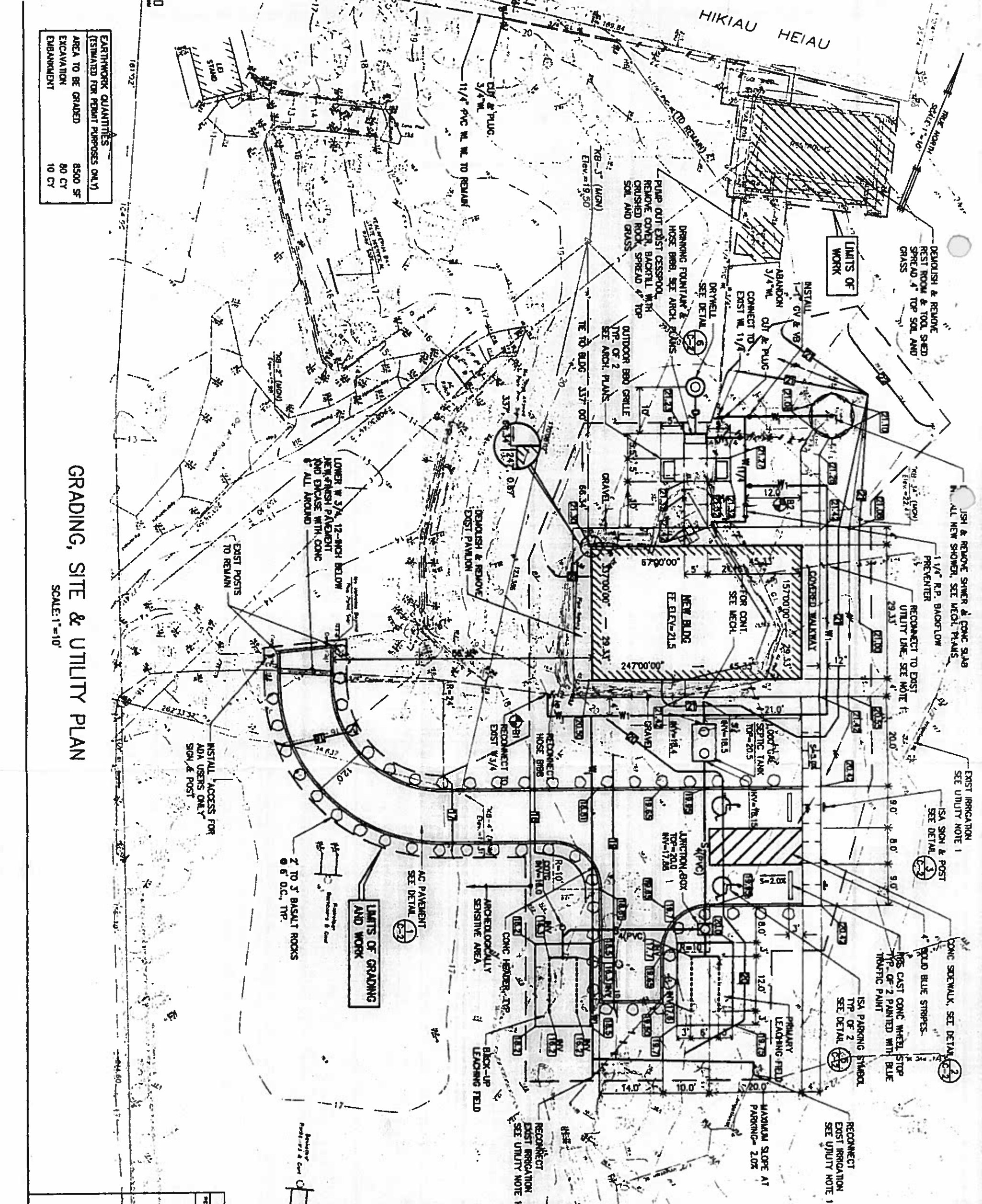


STATE OF HAWAII
DEPARTMENT OF LAND AND NATURAL RESOURCES
ENGINEERING BRANCH, LAND DIVISION
KEAIAKEKUA BAY
STATE HISTORICAL PARK
KEAIAKEKUA, HAWAII

EXTERIOR ELEVATIONS

REVISIONS
NO. DESCRIPTION DATE APPROVED
1
2
3
4
5
6
7

DESIGNED BY: [Signature]
CHECKED BY: [Signature]
DATE: [Date]
SCALE: [Scale]
DRAWING NO. A-3
SHEETS 7



EARTHWORK QUANTITIES (ESTIMATED FOR PRELIM PURPOSES ONLY)	
AREA TO BE GRADED	8500 SF
EXCAVATION	80 CY
EMBANKMENT	10 CY

GRADING, SITE & UTILITY PLAN

SCALE: 1"=10'

LEGEND	DESCRIPTION	NEW
—	EXIST	
—	CONTOUR	21
—	SPOT GRADE	21.22
—	WATER LINE	W
—	SEWER LINE	S
—	ELECTRICAL	E
⊙	BORING LOCATION	B

- UTILITY NOTES:**
- CONTRACTOR TO VERIFY LOCATION & SIZE IN THE FIELD.
 - FOR TYPICAL TRENCH SEE DETAIL (A).
 - FOR REDUCED PRESSURE PRINCIPLE BACKFLOW PREVENTER SEE STD DET 128. PROVIDE TWO 6" THICK BY 12" SQ. CONC PAD FOR PPE SUPPORT.
 - FOR GATE VALVE BOX SEE DWS TYPE-A CONC BOX DET 36.

- EROSION CONTROL MANAGEMENT PRACTICES NOTES:**
- EROSION CONTROL MEASURES TO BE INSTALLED PRIOR TO START OF DEMOLITION PHASE AND BE MAINTAINED UNTIL COMPLETION OF GRADING PHASE.
 - TEMPORARY SILT FENCE IS TO BE INSTALLED AROUND LIMITS OF GRADING/WORK PRIOR TO START OF DEMOLITION AND REMAIN UNTIL COMPLETION OF CONSTRUCTION ACTIVITIES. SEE DETAIL (B).
 - ALL EXPOSED AREAS TO BE GRASSED UPON COMPLETION OF GRADING WORK.

ARCHAEOLOGICAL NOTES:

BECAUSE THE PROJECT AREA IS ADJACENT TO HIKIAU HEIAU AND SIGNIFICANT CULTURAL DEPOSITS HAVE BEEN LOCATED DURING ARCHAELOGICAL TESTING, THE CONTRACTOR MUST CONSULT WITH THE STATE PARKS ARCHAELOGIST ON MATTERS INVOLVING DEMOLITION AND SURFACE DISTURBANCE. THE STATE PARKS ARCHAELOGIST WILL BE ON-SITE DURING THIS WORK AND IS AUTHORIZED TO STOP WORK IN A SPECIFIC LOCATION IF ARCHAELOGICAL REMAINS ARE ENCOUNTERED OR IF WORK THREATENS THE PRESERVATION OF THE HEIAU STRUCTURE. STATE PARKS WILL PROVIDE THESE ARCHAELOGICAL SERVICES AT NO EXPENSE TO THE CONTRACTOR.

- ARCHAELOGIST AND CONTRACTOR WILL DETERMINE PRECAUTIONARY MEASURES TO PROTECT HIKIAU HEIAU DURING THE DEMOLITION OF THE EXISTING REST ROOM STRUCTURE.
- THE ARCHAELOGIST WILL DETERMINE IF THE CONCRETE SLAB OF THE RESTROOM IS TO BE REMOVED OR RETAINED AFTER THE IMPACTS OF REMOVAL ARE ASSESSED.
- ARCHAEOLOGICALLY SENSITIVE AREAS IN THE VICINITY OF THE PROJECT SITE HAVE BEEN IDENTIFIED AND WILL BE AVOIDED BY THE CONTRACTOR DURING CONSTRUCTION.
- IF SUBSURFACE CULTURAL DEPOSITS ARE ENCOUNTERED DURING DEMOLITION, GRADING OR OTHER GROUND DISTURBING ACTIVITIES, WORK WILL CEASE IN THE IMMEDIATE AREA UNTIL THE ARCHAELOGIST IS ABLE TO ASSESS AND DOCUMENT THE REMAINS.



DESIGNED: ATO	DRAWN: MH	CHECKED: HGH
DATE: MAY 16, 2000	SCALE: AS SHOWN	

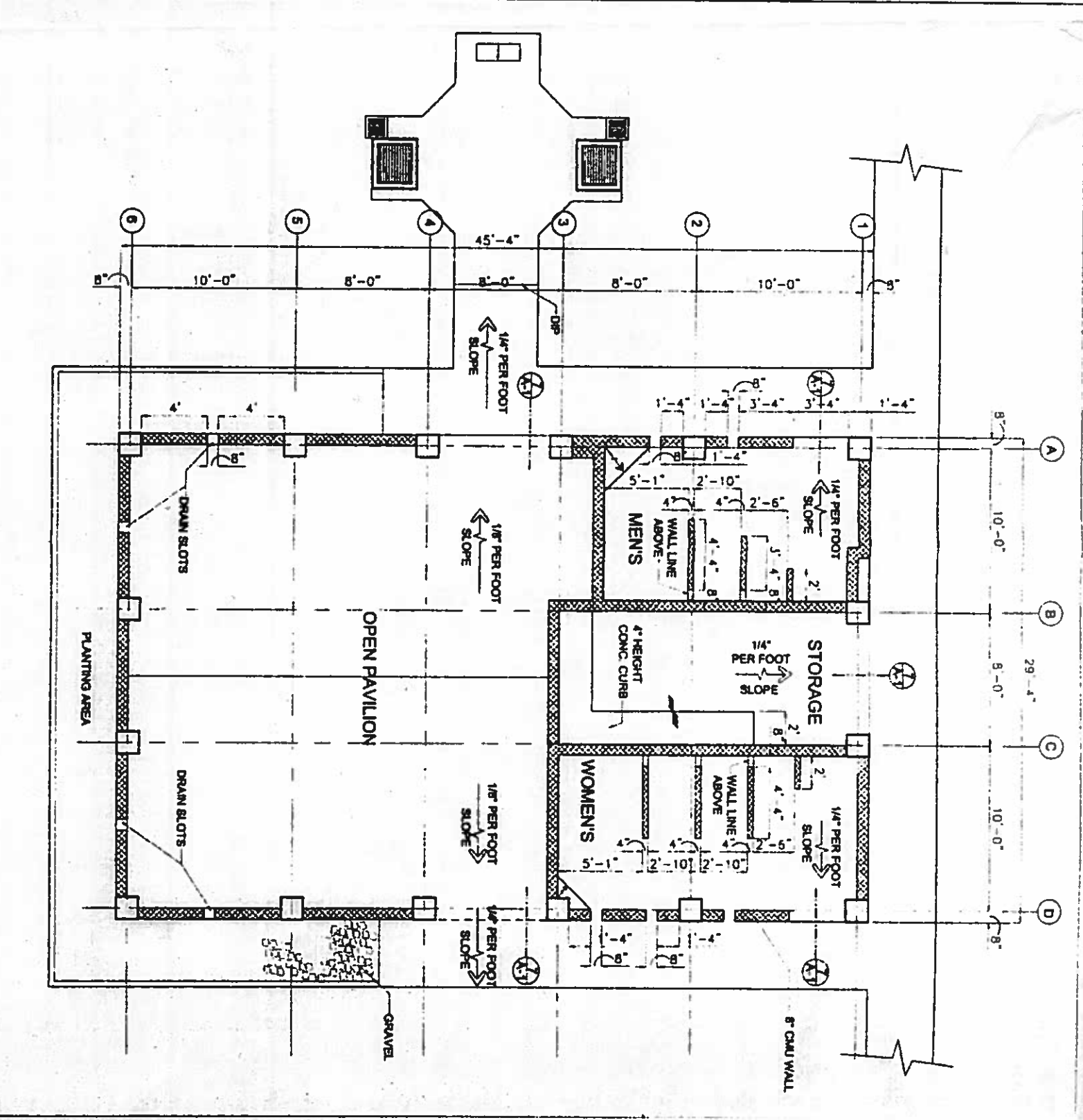
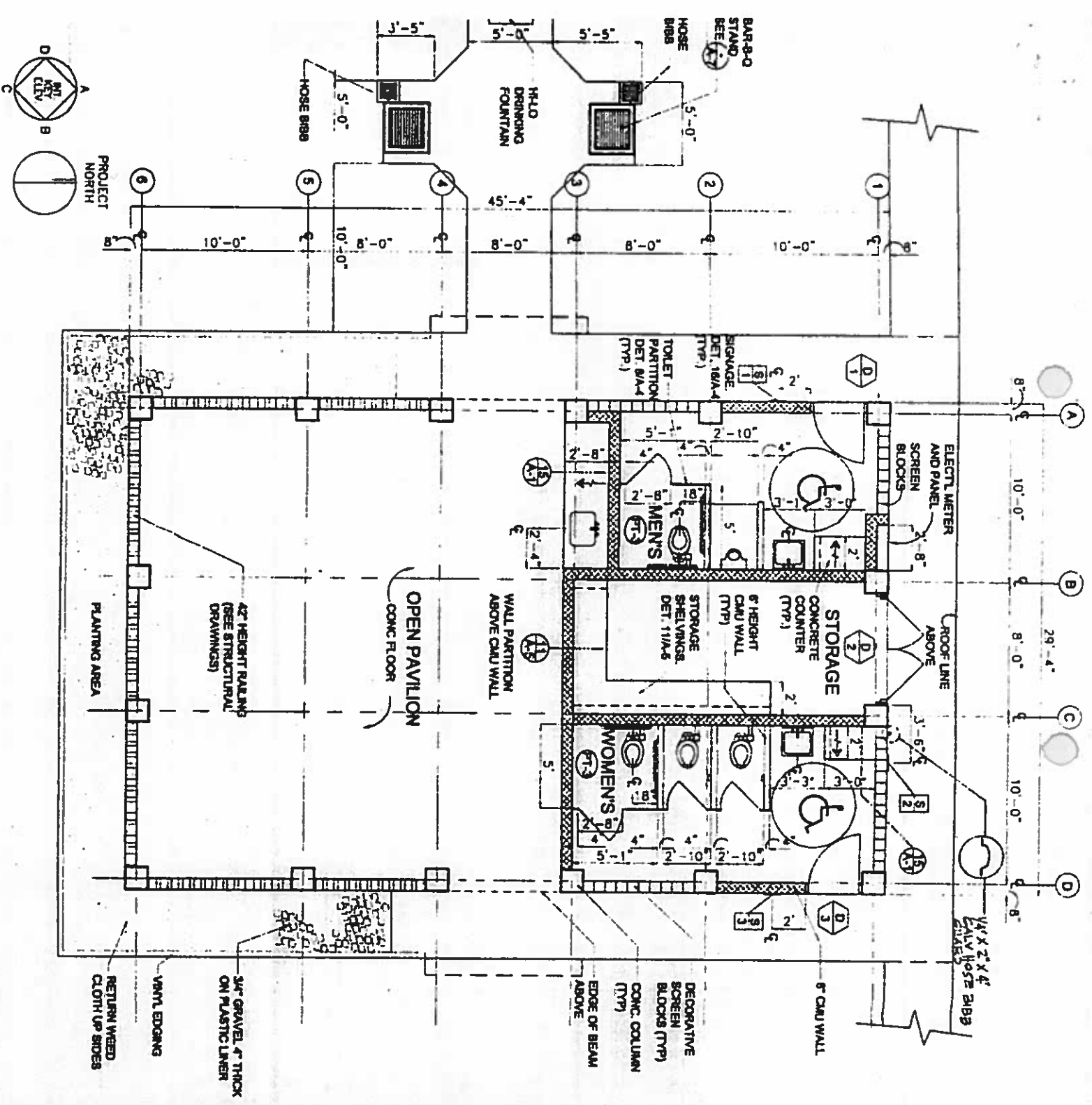
STATE OF HAWAII
DEPARTMENT OF LAND AND NATURAL RESOURCES
ENGINEERING DIVISION
KEALAKEKUA BAY
STATE PARKS
KEALAKAKOA, HAWAII

GRADING, SITE & UTILITY PLAN

JOB NO. _____ SHEET NO. 2 OF 21 SHEETS

APPROVED: *Alan T. Blomberg* DATE: _____ DRAWING NO. C-1

CHEF ENGINEER

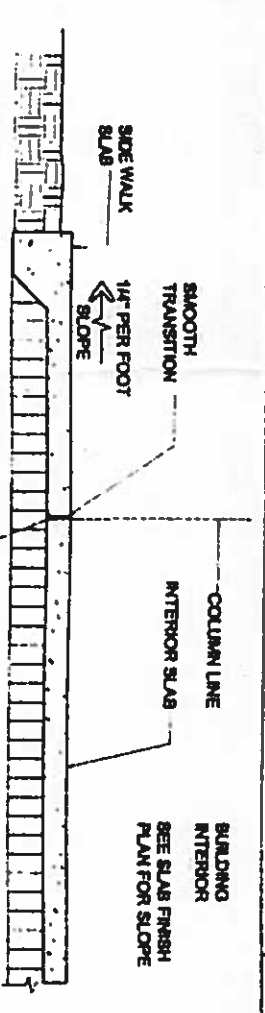
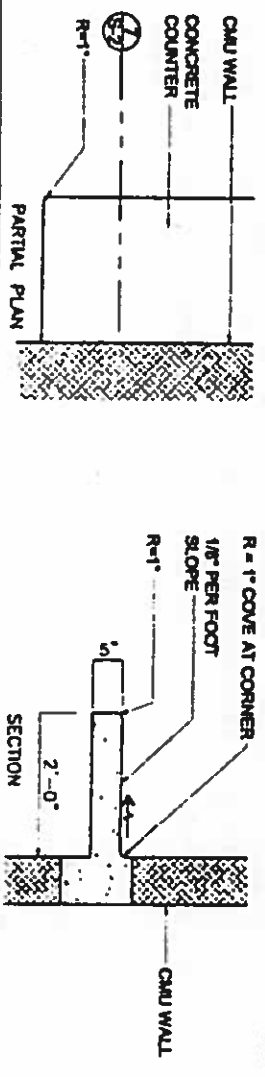


FLOOR PLAN

SCALE 1/4" = 1'-0"

SLAB FINISH PLAN

SCALE 1/4" = 1'-0"



PICAL EDGE & WALL CONDITION @ CONCRETE COUNTER

SCALE 3/4" = 1'-0"

THRESHOLD DETAIL AT DOOR

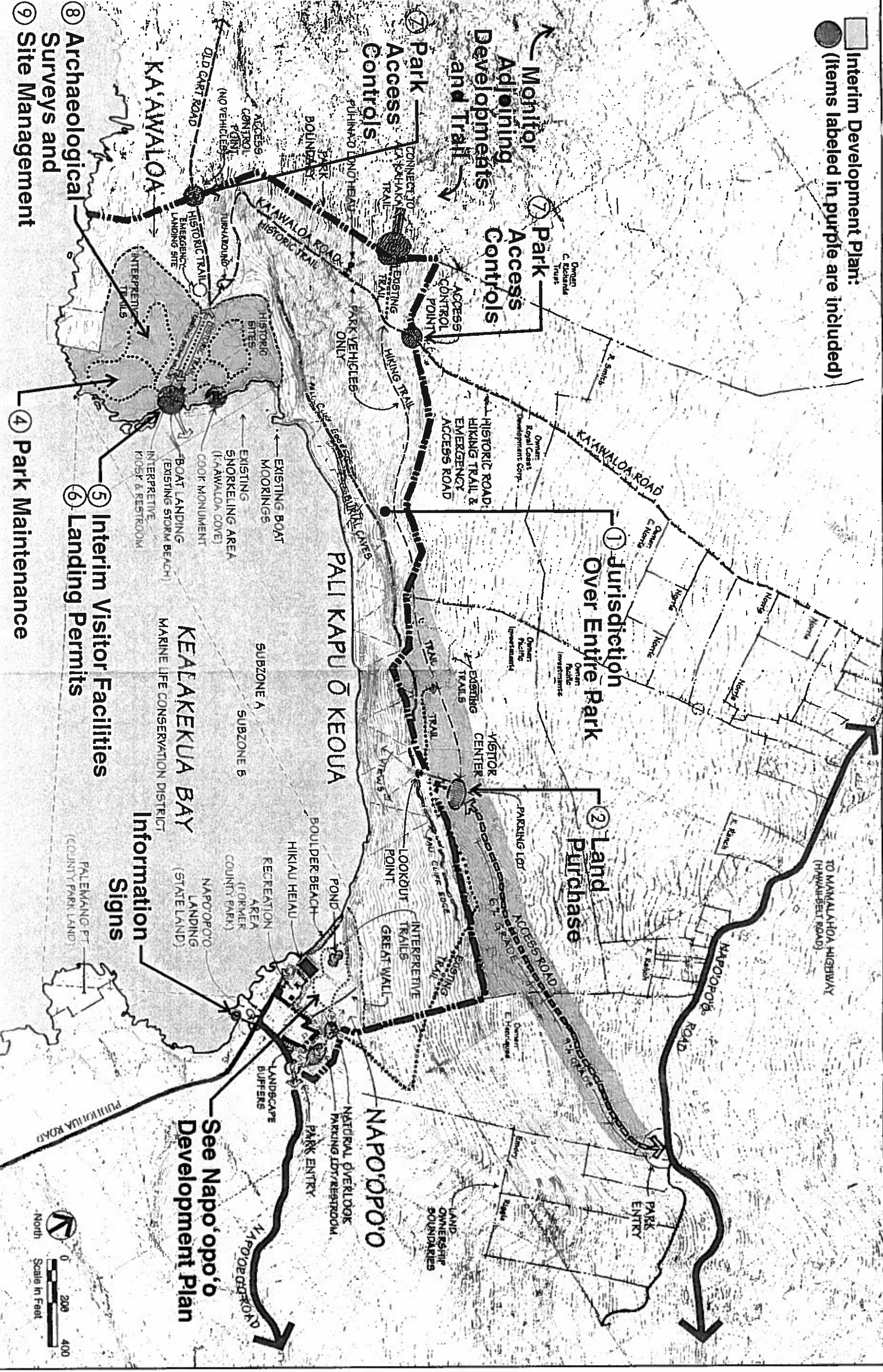
SCALE 3/4" = 1'-0"



STATE OF HAWAII
 DEPARTMENT OF LAND AND NATURAL RESOURCES
 ENGINEERING BRANCH, LAND DIVISION
KEALEKUA BAY STATE HISTORICAL PARK
REPAIR AREA, HAWAII
FLOOR AND SLAB FINISH PLANS

DESIGNED BY L.C.	DATE MAY 2000	SCALE AS SHOWN
CHECKED BY L.C.	DATE MAY 2000	SCALE AS SHOWN
PROJECT NO. 89-1P-F2 SHEET NO. 5 OF 21 SHEETS		

Interim Development Plan:
 (Items labeled in purple are included)



- ① Jurisdiction Over Entire Park
- ② Land Purchase
- ③ Park Access Controls
- ④ Park Maintenance
- ⑤ Interim Visitor Facilities
- ⑥ Landing Permits
- ⑦ Park Access Controls
- ⑧ Archaeological Surveys and
- ⑨ Site Management



See Napo'opo'o Development Plan

Preferred Plan

- Re-creation of Traditional Hawaiian Village
- High Level of Interpretive Facilities

Kealahou Bay State Historic Park

LEGEND

- Historic Features and Trails**
- Traditional Hawaiian Historic Features (to late 1700s)
 - Existing Structures: Preserve or Restore
 - Landscape Features: Restore or Re-create
 - Remove Non-Traditional Vegetation and Features
 - Non-Traditional Historic Features (post 1800) to Remain
- Interpretive Trails**
- Handicapped Accessible
 - Non-Accessible
 - Interpretive Overlooks and Gathering Areas for Demonstrations and Interpretive Talks
 - Views
 - Interpretive Signs
- Park Facilities**
- Buildings/Structures
 - Existing
 - New or Replaced
 - Roads, Dropoffs, and Parking
 - Signs (Park Entry, Directional)
 - Pedestrian Paths
 - Landscape and Landscape Buffers
 - Existing Trees to Remain
 - New Landscape Buffers
 - Recreation Area
 - To be Implemented at a Later Phase of Park Development *

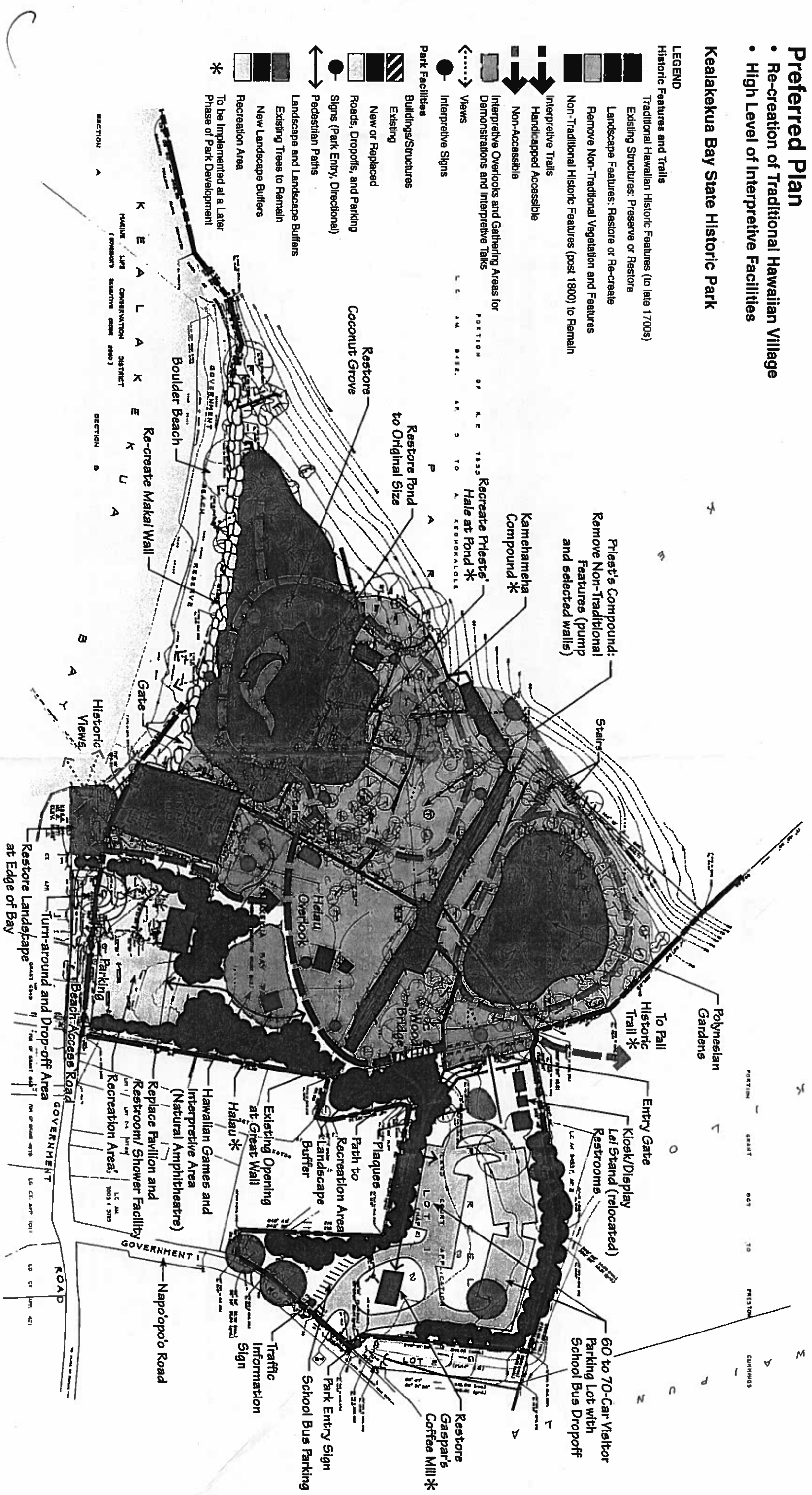


Figure 2.1
NAPŌ'ŌPO'Ō DEVELOPMENT PLAN