

NA ALA HELE
Hawai'i Trail & Access System

2003 FEB 12 PM 1 26

PLANNING DEPARTMENT
COUNTY OF HAWAII

September 10, 2003

Steven S.C. Lim
Carlsmith Ball LLP
121 Waiānuenue Avenue
P.O. Box 686
Hilo, Hawaii 96721-0686

Re: Request for State Trail Abstracts for TMK (3) 8-7-05:02
and (3) 8-7-3:01

Dear Mr. Lim,

The Na Ala Hele Abstractor has not conducted a formal abstract on the subject parcels. We are aware of Civil Actions 5473 and 5475 that reserved to the State trails identified as "old king's highway" and "makai trail. These Civil Actions involve the parcels mentioned above and are available for review at the Third Circuit Court in Kona.

If you have any questions please contact me at 587-0062.

Sincerely,

Curt A. Cottrell

CAC/dmr

cc: Irving Kawashima, Acting Trails Specialist

SUITE 202, 688 KINOOLE ST. HILO, HAWAII 96720
TELEPHONE 808-961-6648 FAX 808-969-1854
Email john@tolmieproperties.com

**LAUPAHOEHOE
PROPERTIES,
LLC**

FAX

To: Rodney Oshiro

From: John S. Tolmie Jr. President of

Laupahoehoe Farms, Ltd., Managing Member

Fax:

Pages:

Phone

Date: December 29, 2001

Re: Attached Letter

CC:

Urgent For Review Please Comment Please Reply Please Recycle

● **Comments:**


I am purchasing the Magoon Estate makai properties and Magoon provided us with a copy of your letter. I would like to know whether the GPS survey was ever completed? If the GPS survey was completed, could I obtain a copy?

After the New Year please call me to discuss.

Aloha and Happy New Year, John.

REPLY BY ENDORSEMENT:

Enclosed is a field reconnaissance report compiled by Na Ala Hele Technician Pat Thiele.


Rodney T. Oshiro
Na Ala Hele

31 Dec 2001

Old Government Beach Road
Through South Kona, Pahoehe 1-4, (TMK: 8-7-03) to Opihiali 2
Nov 99 through May 00
Patrick Thiele

Pahoehe 1-4, Maunaoni 1-6, and Makuu 1-3

No ground reconnaissance was conducted in these ahupuaa, however according to the Na Ala Hele Abstractor, Civil 5475 reserves to the State of Hawaii an easement over the "old King's Highway" paralleling the shore. The 1855 Fuller survey for the Pahoehe, Maunaoni and the Makuu ahupuaa indicate a "Public Road" passing above the pali approximately 1300 feet mauka of the shoreline between the 400 and 600 foot elevations. That "Highway" is high lighted in pink, in approximately the location indicated on the attached USGS Quadrangle, Kauluo Point.

See also: Grant 1971 & 1974

Haleili, Haukalua, Alae and Pahoehe 1-3

A thorough search below the 240ft elevation in these ahupuaa revealed no evidence of an OGR close to the shoreline. Possibly it is covered by the existing jeep roads and the 1950 lava flow. No ground reconnaissance was made above the pali in this area. Our Abstractor has determined that Civils 5473 and 5475 have reserved the "makai trail" and the "old King's Highway" to the State. The notes of survey for the ahupuaa of Haleili, Haukalua 1 and Pahoehe 1 & 3 indicate the "Public Road" continues south above the pali. It will require additional research and possibly negotiation to determine how this road might be connected to the coastal road shown in TMKs: 8-7-05 and 07 and in Grants 2024, 2025 and 2036 to provide a continuous lateral easement. These alignments also shown in pink.

See also: Grants 1970, 2036, 2025 & 2024

Kaohe 1-5, Waikakuu & Kukuiopae 1-2

The coastal OGR, high lighted in yellow, can be followed south from the southern edge of the 1950 lava flow, ① in Kaohe 2 through all the ahupuaa to Kalualapauwila ②, on the southern boundary of Kukuiopae 2. Much of it is heavily obstructed by koa haole, sisal and christmas berry. It averages 6 feet wide between single course kerb stones, where present, with a gravel surface over a'a substrate. Figure 1. In Waikakuu there are several substantial kipaepae which carry the OGR across gulches. The largest remaining intact kipaepae measured 10 feet wide (no kerb), 15 feet long and 6 feet high with an iliili and gravel surface. Figure 2. Remnants of a longer kipaepae can be seen on the south side of the large inlet about the center of Waikakuu, ③. There are numerous habitation sites and likely burials all along the route into the northern third of Kukuiopae 2.



Figure 1 - OGR passes makai of large platform.

The OGR continues south well mauka of the coast following the alignment of the trail indicated on the current quad map, going up the slope of Kalualapauwila, following the ridge, then descending the south side, where about 200 meters into Kolo it is intersected and overlain by a bulldozed jeep road. Figures 3 & 4.

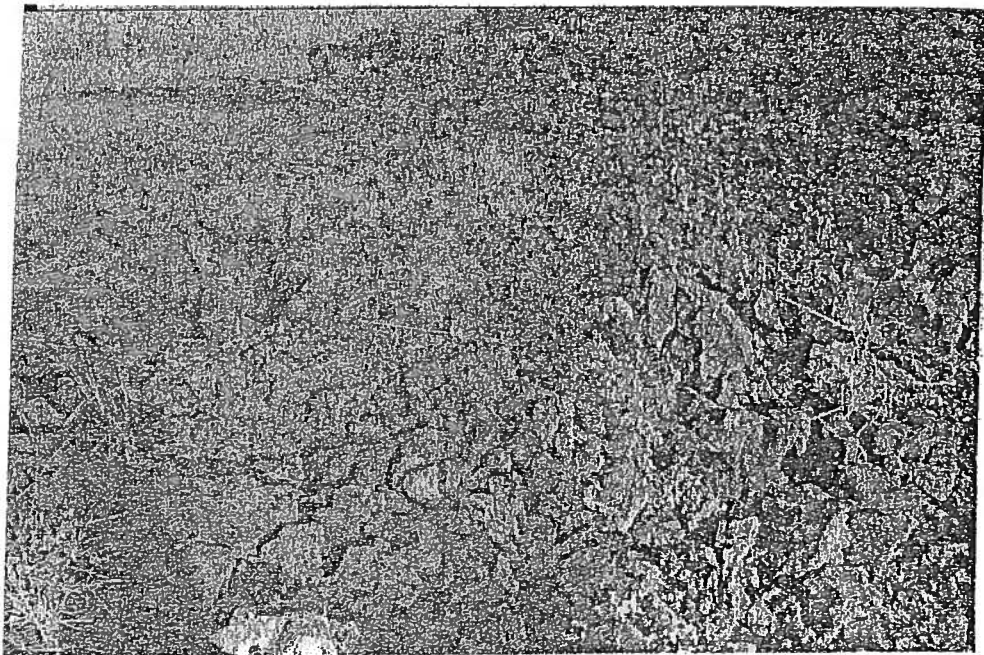


Figure 2 - Kipaepae in Waikakuu.

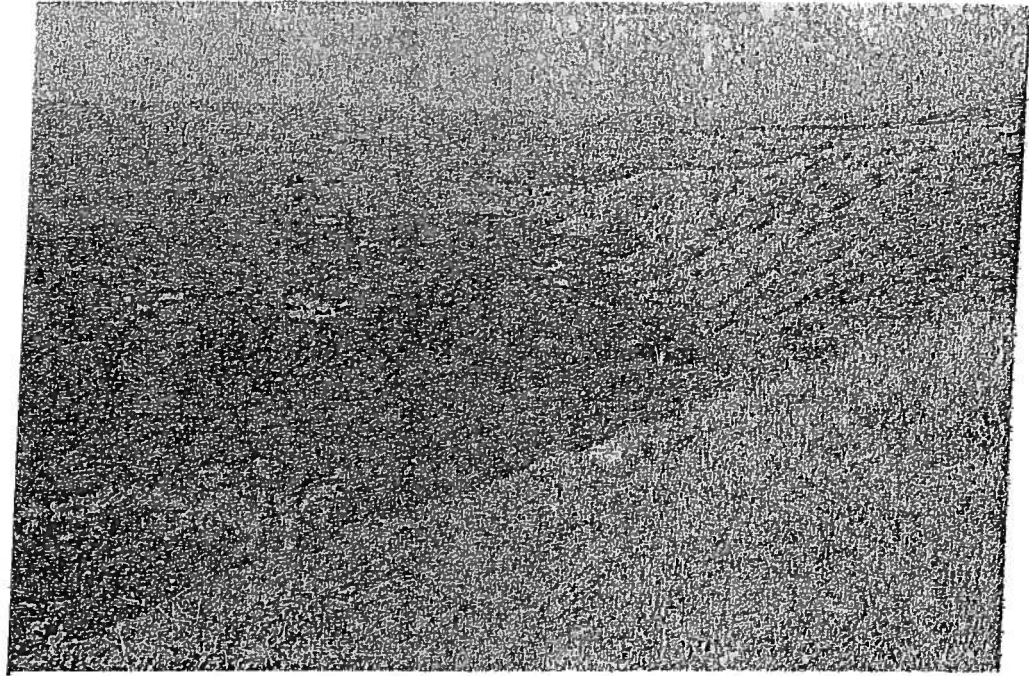


Figure 3 - Kalualapauwila, Kukuiope 2.

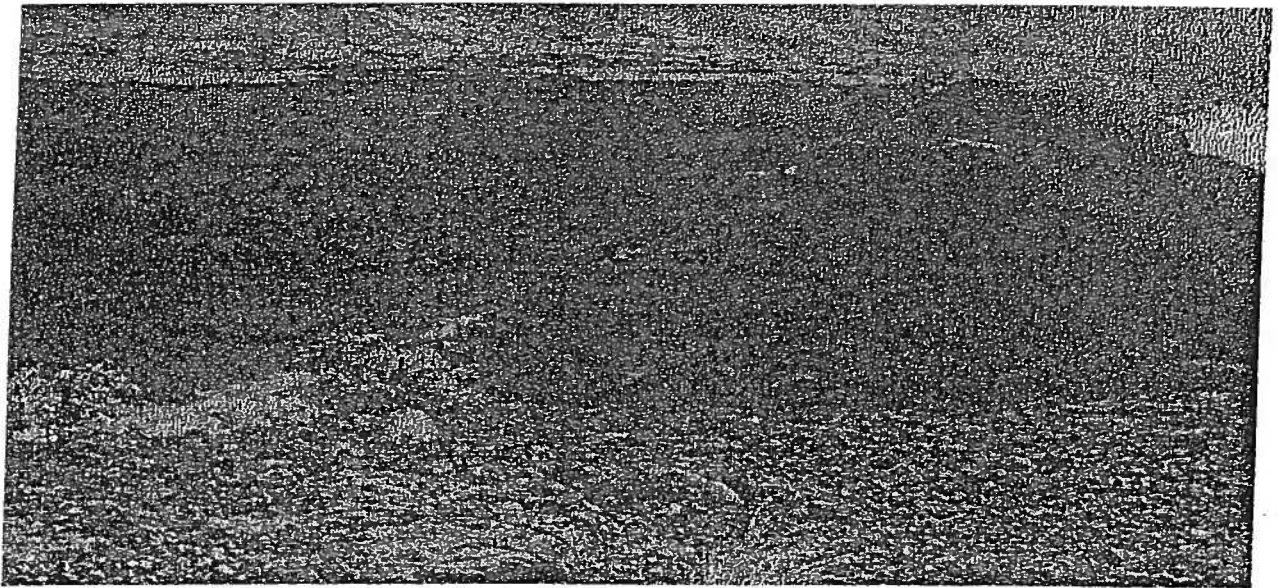


Figure 4 - Jeep road overlying OGR in Kolo. Note ancient ala loa adjacent, makai.

Two mauka-makai trails, high lighted orange, originate in the vicinity of Lae Nani in Kukuiope 2. One (a) begins as a 3 foot wide gravel trail over a'a with occasional embedded ala. Additional ala which can be seen immediately adjacent to the trail may indicate it was converted from an Apple type "A" stepping stone trail to a type "AB" horse trail. I followed this trail mauka about 100 meters to where a bulldozed jeep road breaches and overlays it. The second, (b) originates at the OGR and proceeds diagonally mauka in a southwesterly direction. It too is about 3 feet wide, no true kerbs, gravel over soil and a'a substrate. No stepping stones were observed. Figure 5. I followed this trail about 1/4 mile to the jeep road but failed to reacquire it on the mauka side.

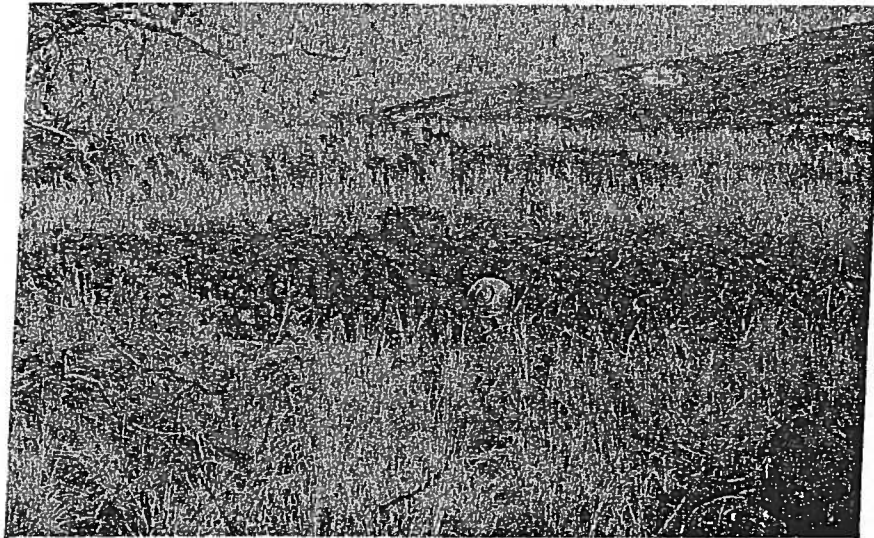


Figure 5 - Low Kipaepae on (b) mauka-makai trail, 6 feet wide, 3 feet high and 30 feet long.

A remnant section of the waena OGR (a continuation of the OGR above the pali in Haleili-Haukalua-Alae, etc.), was discovered in its projected alignment in Kaohe 1-3. About the 400 foot elevation, the intact remnant, high lighted green, is 10 feet wide, 30+ feet long, located about 50 meters makai and NW of the end of Huna Kai Road N in Kona Paradise subdivision. The end nearest the subdivision has been destroyed by bulldozer grubbing. I followed the road north about 200 meters. It has a stone wall built on the mauka edge which has collapsed on to the road, partially obscuring it.

See also: Grants 1973, 2368, 3141, 3166, 1975, Mahele Aw. 25 & Civil 5474

Kolo, Olelomoana, Opihihali 1-2

The coastal jeep road overlays the coastal OGR in Kolo. Two short sections of OGR can be observed on the mauka side of the jeep road where the jeep road bends. Further south at (c) a 6 foot wide trail over soil heads mauka to the base of the cliff then turns SW and ascends without switch backs, also high lighted orange. This section is gravel over a'a, no kerbs, with a retaining wall on makai side. Figure 6. About 100 meters further south the OGR continues straight while the jeep road turns makai to the old landing opposite Kapuali (Kapualii?) Rock.

The OGR passes along the base of the pali in the Kolo-Olelomoana boundary area, Figure 7, continuing south to Kowali Point, on the boundary of Opihiali 2, where it ends. It is 64" wide between kerbs up to 18" high, with a gravel and sand surface incorporating some coral, shell and iliili. Many ala are incorporated in the kerbing, some still embedded in the tread way. Others can be seen cast aside or in short alignments immediately adjacent to the OGR.

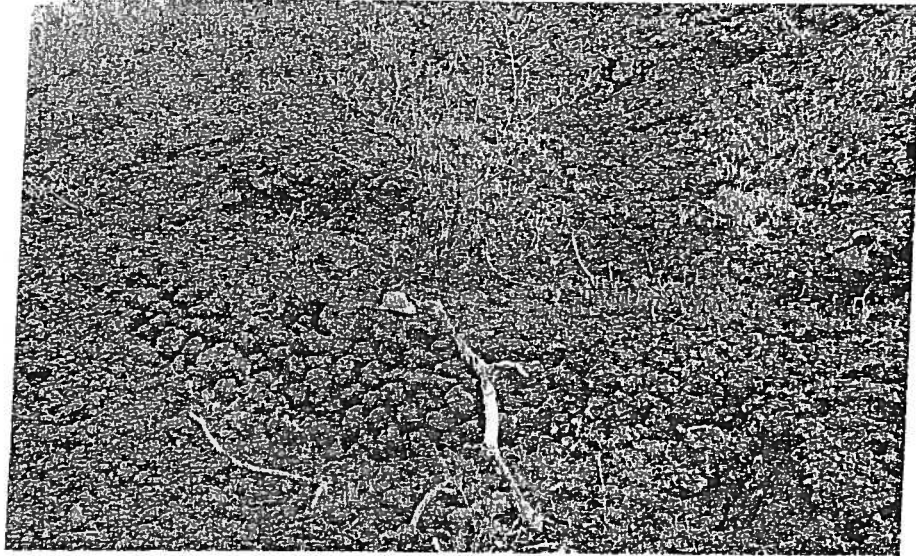


Figure 6 - Pali trail to Kolo landing.

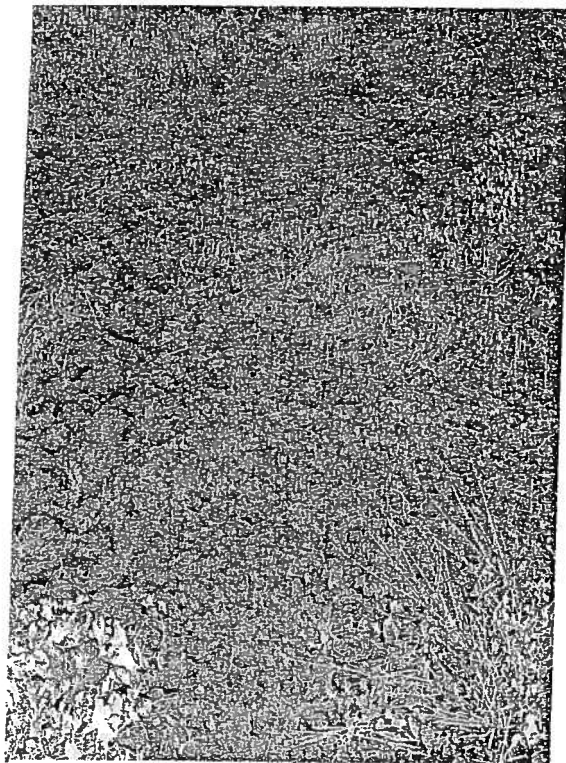


Figure 7 - OGR below the pali in Kolo-Olelomoana.

The OGR is labeled 4 WD on the quad map but it is not a 4 WD road. The jeep roads are adjacent mauka and makai but only breach the OGR 4 times, they do not overlay it. Figure 8.

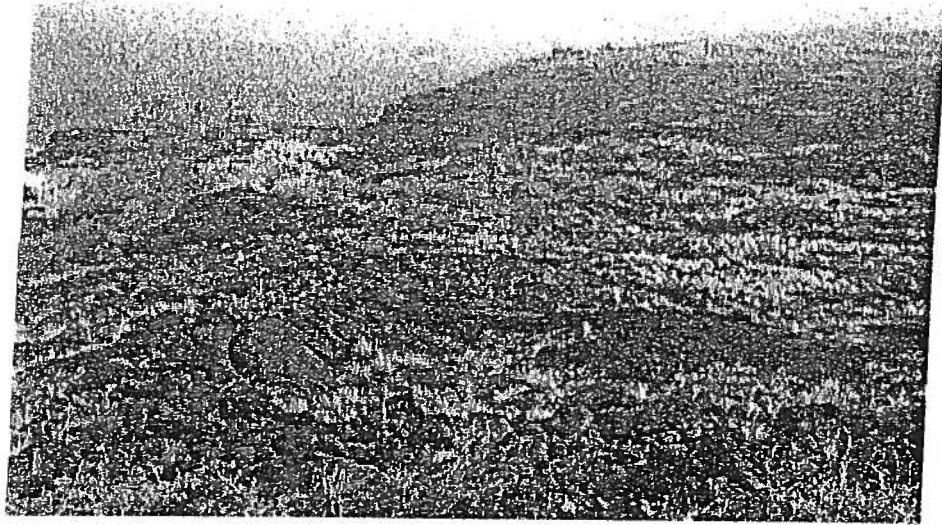


Figure 8 - The end of the coast road. Kowali Point, Opihihali 1.

Opihihali 2

A search of the entire width of Opihihali 2 (mostly pahoehoe) from the base of the pali to the sea cliff revealed no sign of deliberate trail construction except in the immediate vicinity of Kowali Point where there appeared to have been a habitation site and numerous possible burials.

Foot Trails

The major mauka-makai trails have been described as they were encountered in each ahupuaa but there are many lesser foot trails, both gravel and stepping stone, which I have not described, throughout the area surveyed. These foot trails are shown on the accompanying map high lighted in blue. One of these alignments, which I have labeled "ancient ala loa", can be followed as a nearly continuous route adjacent to, or incorporated in, the coast OGR. Figures 9 and 10.

Place names

Place names and notes from: Emerson, Field Book, Reg No. 256, 1883-84, Vol. VI.

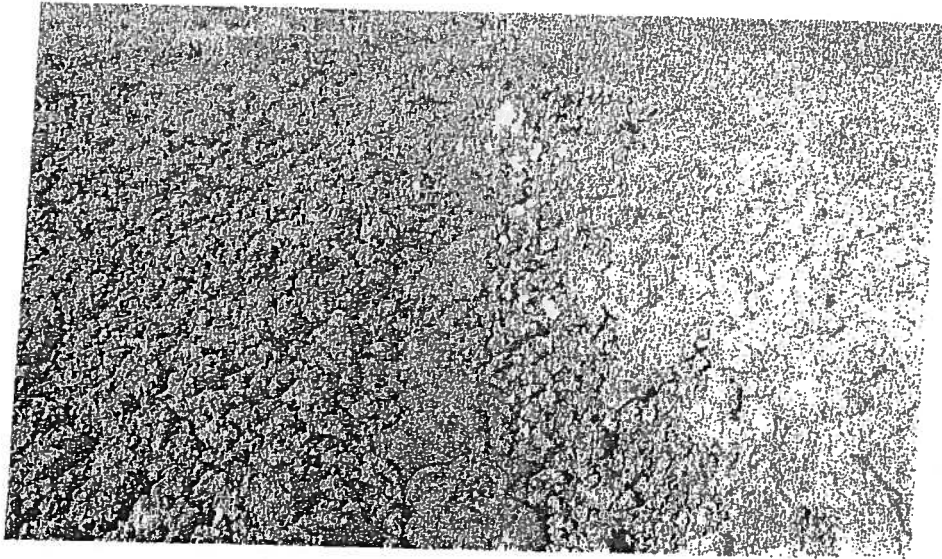


Figure 9 - Stepping stone trail in Kukuiopae.

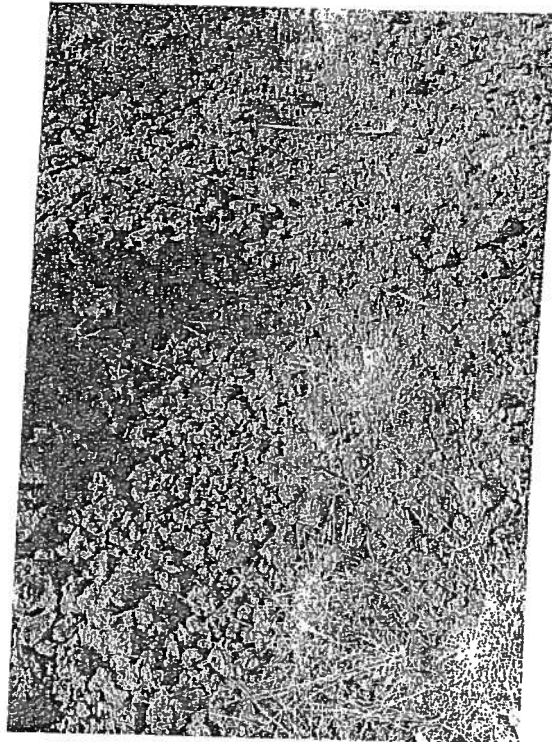


Figure 10 - Gravel foot trail in Kukuiopae. Tape measure set at 1 meter.

Scale: 130%

1996 edition USGS
Kaulua Point

Pahoehoe 1-4 }
Maunaoni 1-6 } THK: 8-7-03 { Gr: 1974 Civil # 5475
Makuu 1-3 } { Gr: 1971

TMK 8-7-3-1

Haleili }
Haukalua 1 & 2 } THK: 8-7-05 { Gr: 1970 Civil # 5473
Alae 1 & 2 } { Gr: 2036

TMK 8-7-5-2

Pahoehoe 1, 2 & 3 }
Kaohi 2 } THK: 8-7-07 { Gr: 2025 LCA 8519-B Civil # 5475
Kaohi 2 } { Gr: 2024

Kaulua Point
Lae Humuhumu

Kaohi 1 & 3 }
Kaohi 5 } THK: 8-7-09 { Gr: 1973 Civil # 5474
Waikakuu } { Gr: 2368
Waikakuu } { Gr: 3141

Kaohi Bay

Kaohi 4 - THK: 8-7-15/20 Mahele Aw. 25

Mokuoloelo Cape

Kukuiope 1 & 2 - THK: 8-7-11 { Gr: 3146
Kukuiope 2 } { Gr: 1975

Waikakuu Bay

Kukaheka Point

At this point a great deal of firewood cut from the ohia forest directly above this station, is shipped.

Kapukaokeana Bay

Lae Nani

Kalepeamo Rock *

Kalaepahupahu

Keawaolalau Bay

Konou Point

Auuu Point

Ka Lae Nui

Kalualapauwila Crater

Kolo }
Olelomoana 1 & 2 } THK: 8-7-13
Opihihali 1 & 2 }

Kahiolu Bay

Kapuali Rock & Cape

Puoa Point

Kaluane Rock

Halali Bay

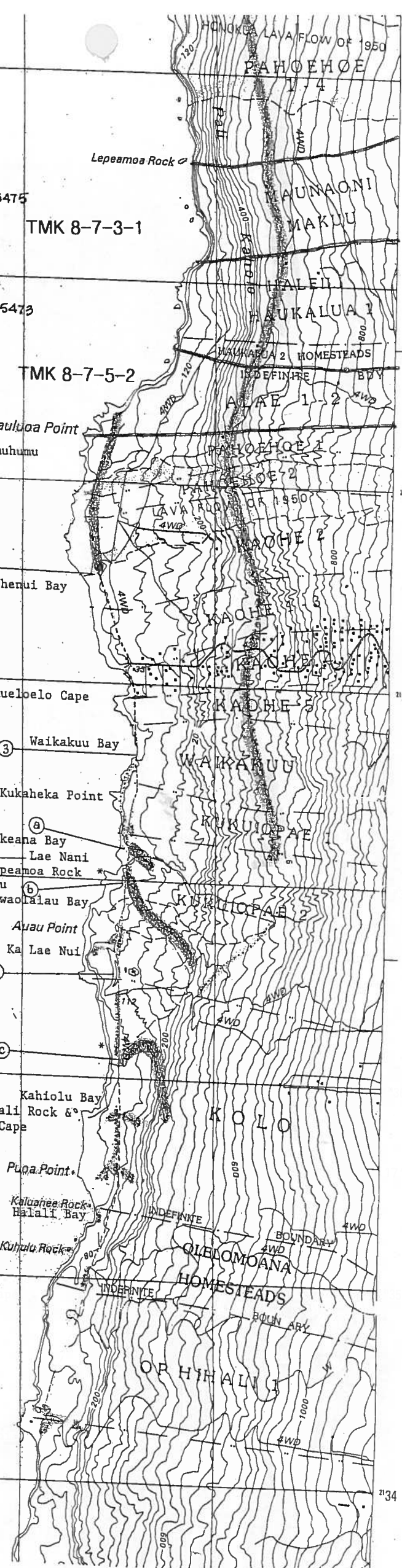
Kukulu Rock

Kuhulu Rock

OLELOMOANA

HOMESTEADS

OPHIHALI



241
20'
240
239
238
234