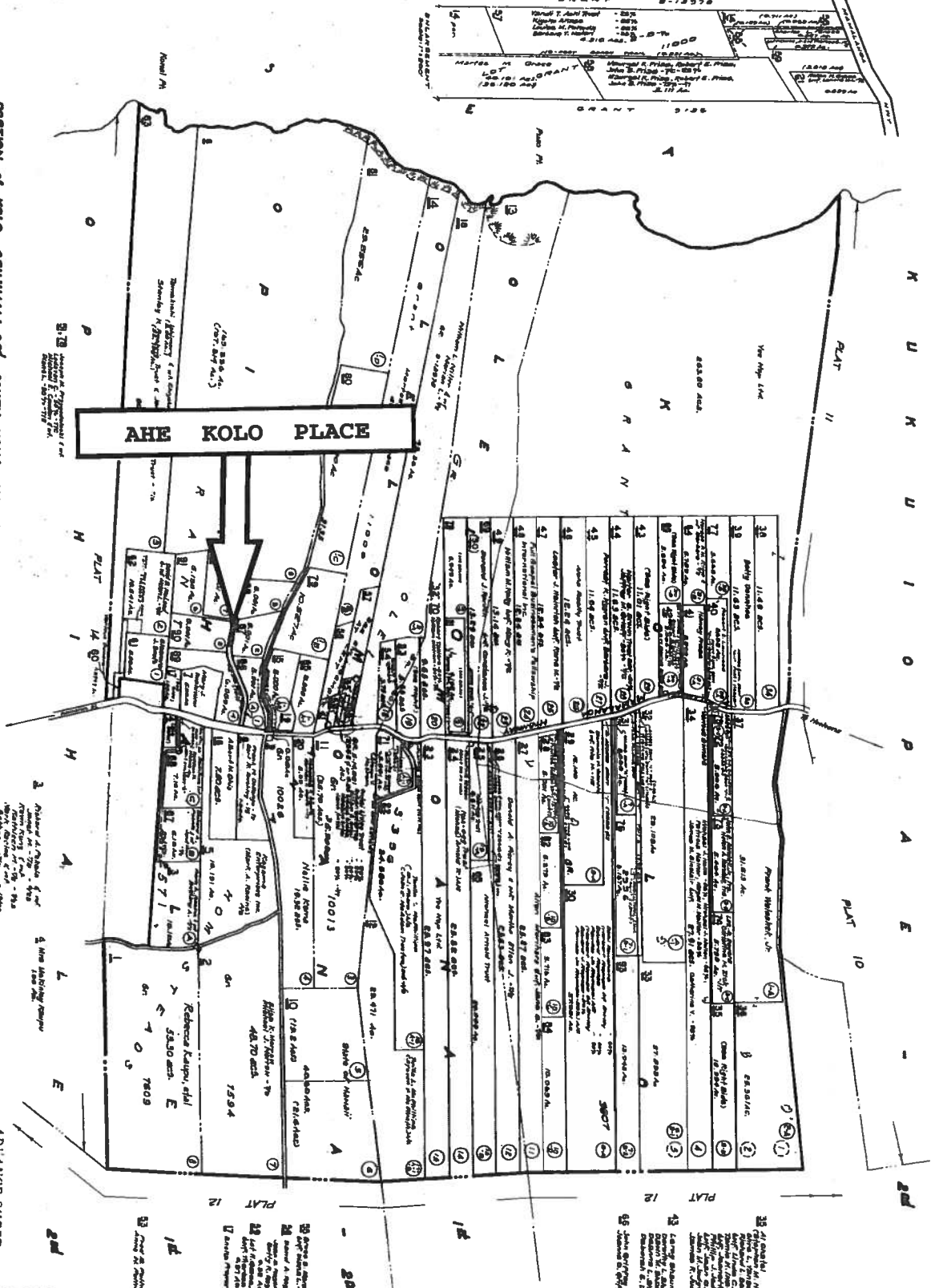


PORTION OF KOLO-OPIHIAHAI 2d, SOUTH KOVA, HAWAII.



ADVANCE SHEET  
SUBJECT TO CHANGE

THIRD DIVISION	8
ZONE SEC.	7
PLAT	13
CONTAINING PARCELS	
SCALE 1 IN. = 500 FT.	