

24

24

side yard setback

Interm Park Trail

Property line

20' side yard setback

166'

21813-22

Proposed Restrooms Facility, refer to drawing: A-1 for layout

trench show

concrete pav

24

26

28

21813-8

69.5"

20'

21813-12

20' side yard setback

existing stone preservation stone wall

Interm Park Trail

26

20

HALF SIZE (SCALE LINE FOR 1"=1')

FIG. 13 JAN 2017 10:22am  
P:\PROJECTS\HAWAII\Haleaakala Shoreside Park\CD\SHRETS\Access\Parking Lot\Access\Parking Lot - Planning Sheets.dwg

21813-12

NEW PICNIC TABLE

PROPOSED RESTROOM FACILITY (BY OTHERS)

EXISTING PAHOEHOE ROCK TO REMAIN

EXISTING STONE WALL

EXISTING ARCHAEOLOGICAL SITE

EXISTING TREES TO REMAIN

DRAINAGE STRUCTURES (BY OTHERS)

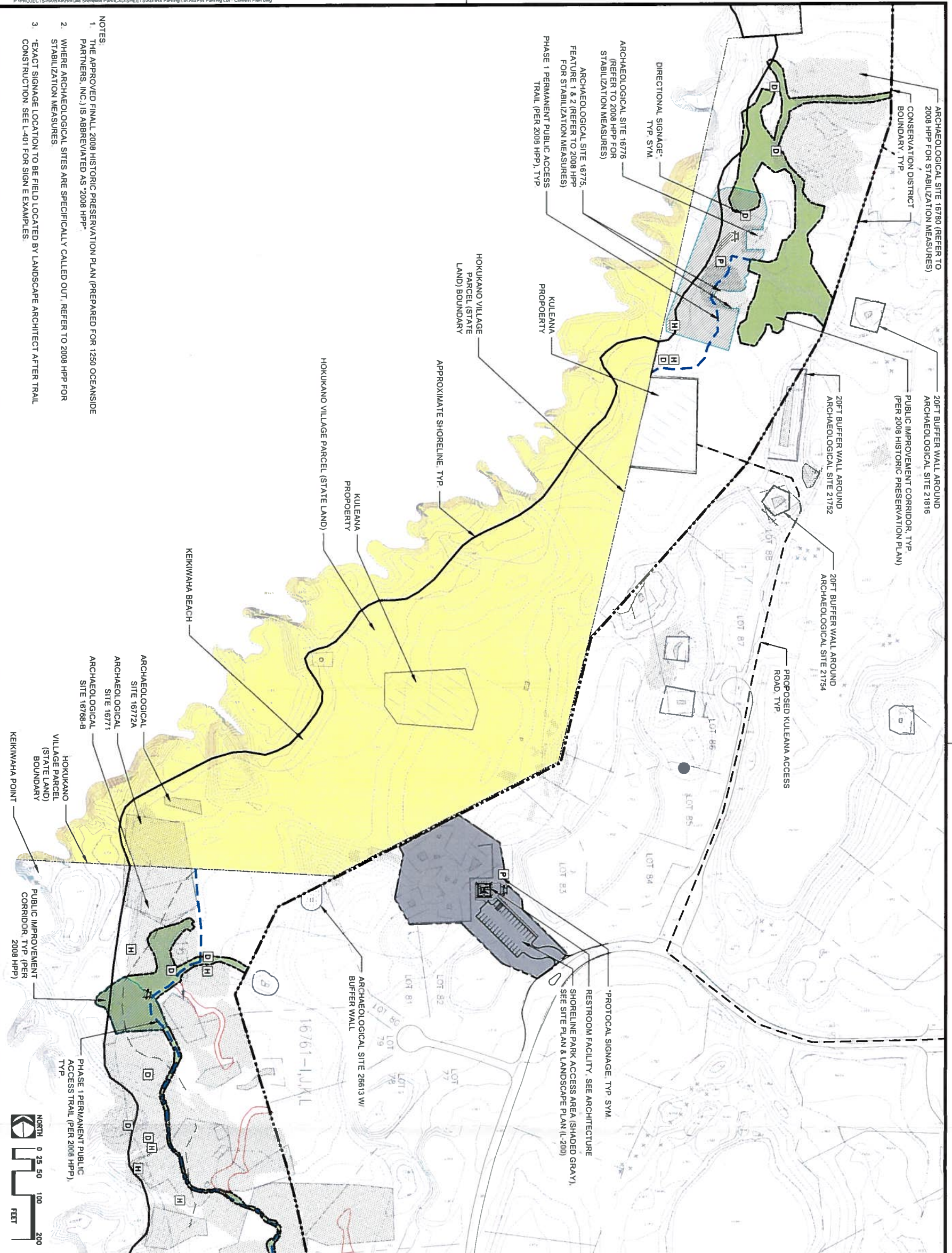
EXISTING PAHOEHOE ROCK TO REMAIN

PARKING LOT (BY OTHERS)

DRAINAGE STRUCTURES (BY OTHERS)

Trim: 22"x36"

© Copyright 2016 PBR HA



- NOTES:
1. THE APPROVED FINAL 2008 HISTORIC PRESERVATION PLAN (PREPARED FOR 1250 OCEANSIDE PARTNERS, INC.) IS ABBREVIATED AS 2008 HPP.
  2. WHERE ARCHAEOLOGICAL SITES ARE SPECIFICALLY CALLED OUT, REFER TO 2008 HPP FOR STABILIZATION MEASURES.
  3. EXACT SIGNAGE LOCATION TO BE FIELD LOCATED BY LANDSCAPE ARCHITECT AFTER TRAIL CONSTRUCTION SEE L-401 FOR SIGN EXAMPLES.

ARCHAEOLOGICAL SITE 16778  
 (REFER TO 2008 HPP FOR STABILIZATION MEASURES)

ARCHAEOLOGICAL SITE 16775  
 FEATURE 1 & 2 (REFER TO 2008 HPP FOR STABILIZATION MEASURES)

PHASE 1 PERMANENT PUBLIC ACCESS TRAIL (PER 2008 HPP), TYP.

DIRECTIONAL SIGNAGE, TYP. SYM.

ARCHAEOLOGICAL SITE 21816  
 20FT BUFFER WALL AROUND ARCHAEOLOGICAL SITE 21816

PUBLIC IMPROVEMENT CORRIDOR, TYP. (PER 2008 HISTORIC PRESERVATION PLAN)

20FT BUFFER WALL AROUND ARCHAEOLOGICAL SITE 21752

20FT BUFFER WALL AROUND ARCHAEOLOGICAL SITE 21754

PROPOSED KULEANA ACCESS ROAD, TYP.

HOKUKANO VILLAGE PARCEL (STATE LAND) BOUNDARY

APPROXIMATE SHORELINE, TYP.

KULEANA PROPERTY

KEIKIWAHA BEACH

ARCHAEOLOGICAL SITE 16772A

ARCHAEOLOGICAL SITE 16771

ARCHAEOLOGICAL SITE 16788-B

HOKUKANO VILLAGE PARCEL (STATE LAND) BOUNDARY

KEIKIWAHA POINT

ARCHAEOLOGICAL SITE 26613 W/ BUFFER WALL

RESTROOM FACILITY, SEE ARCHITECTURE SHORELINE PARK ACCESS AREA (SHADED GRAY), SEE SITE PLAN & LANDSCAPE PLAN (L-200)

PROTOCOL SIGNAGE, TYP. SYM.



Trim: 22"x36"

SHEET 1 of 13 Sheets

Rev	Date	Description	Eng	App
△				
△				
△				

THIS WORK WAS PREPARED BY ME OR UNDER MY SUPERVISION AND CONSTRUCTION OF THE WORK UNDER MY OBSERVATION.

IANAN, M. PH. ARCH. LEED  
 LANDSCAPE ARCHITECT  
 IANAN ARCHITECTS  
 2100 KALANANAKUHI  
 HONOLULU, HI 96815  
 P: 808-955-1111  
 F: 808-955-1112  
 WWW.IANANARCHITECTS.COM

**IANAN ARCHITECTS**

Client:  
 SUN KONA PROPERTIES I, LLC  
 2260 DOUGLAS BOULEVARD, SUITE 240  
 ROSEVILLE, CA 95661

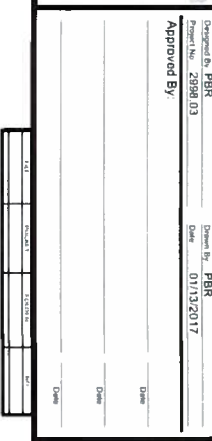
**HOKULEIA**  
 SHORELINE PARK ACCESS LOT

L-100  
 PUBLIC ACCESS TRAIL  
 CONTEXT PLAN

Designed by: PBR  
 Project No.: 2898-03  
 Date: 01/13/2017

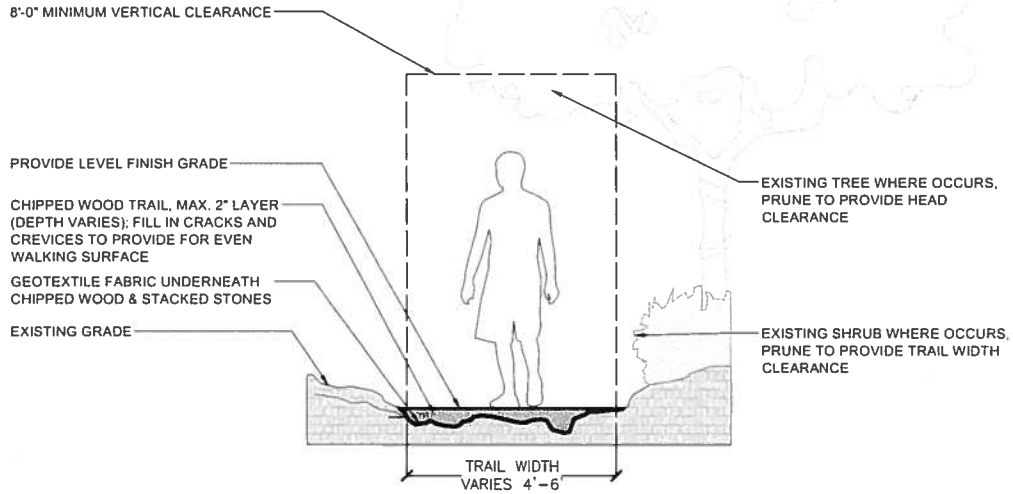
Drawn by: PBR  
 Date: 01/13/2017

Approved By: \_\_\_\_\_  
 Title: \_\_\_\_\_

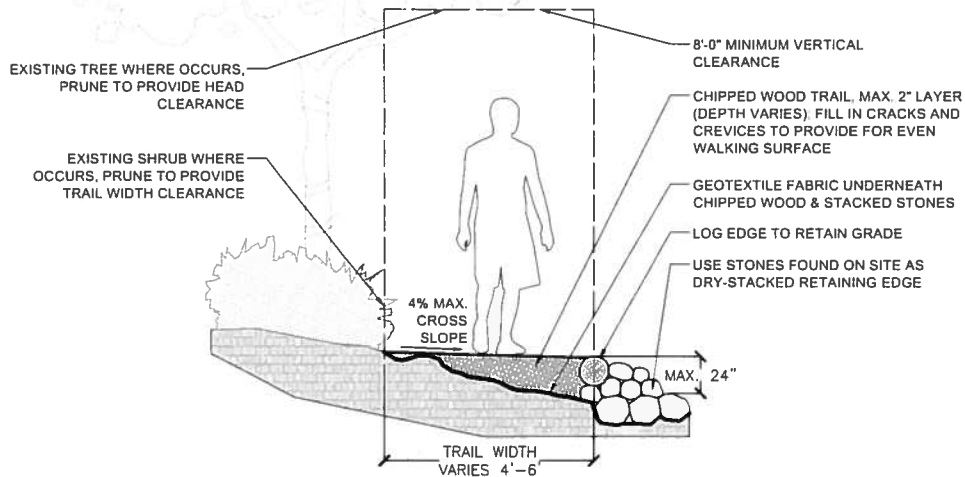


**NOTES**

1. EXACT TRAIL LOCATION AND WIDTHS SHALL BE FIELD DETERMINED BY LANDSCAPE ARCHITECT
2. ALL LOG EDGE/NEW TRAIL EDGING SHALL BE FROM ON-SITE TREE DEMOLITION OR TREE TRUNKS BRANCHES FOUND ON-SITE
3. REMOVE ALL ORGANIC MATERIAL AND FOREIGN DEBRIS (IE PLANTS, STICKS, LEAVES, ETC) ON LAVA ROCK OR BETWEEN CRACKS PRIOR TO LAYING DOWN NEW GEOTEXTILE FABRIC.
4. CHIPPED WOOD SHALL BE 1"-2" DIAMETER SIZE
5. IF WOOD SHIP TRAIL REQUIRES > 2" DEPTH, USE CINDER (3/4" MINUS) LAYER UNDER WOOD CHIPS



**1** TYPICAL TRAIL SECTION DETAIL  
N.T.S.



**3** TYPICAL TRAIL SECTION DETAIL WITH STACKED STONE RETAINING EDGE  
N.T.S.

HALF SIZE TRAIL LINE FOR 11"x17"

FILE: 19 MAY 2017 - 11:48am  
 USER: DRY Landscape PROJECT: HAWAIIAN LAVA SHORELINE PARK/CD/SHEETS/Access Parking Lot/Access Parking Lot/Access Parking Lot/Trail Details.dwg

**NOTES:**

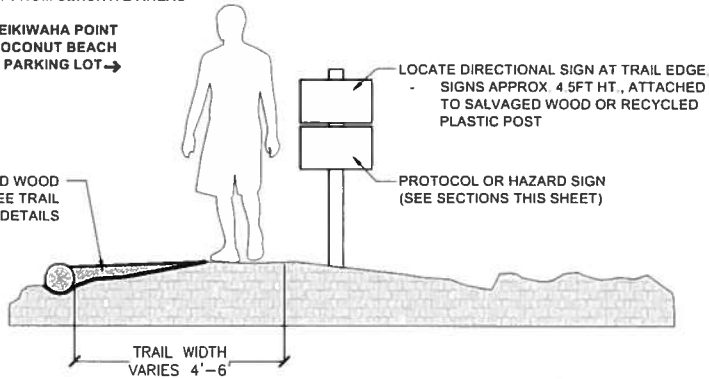
1. SIGNS AND DETAILING BY OTHERS.
2. EXACT SIGN LOCATIONS SHALL BE FIELD DETERMINED BY LANDSCAPE ARCHITECT.

**EXAMPLE DIRECTIONAL SIGN TEXT.**

**STAY ON TRAIL  
KEEP AWAY FROM SENSITIVE AREAS**

← KEIKIWAHA POINT  
← COCONUT BEACH  
PARKING LOT →

CHIPPED WOOD  
TRAIL. SEE TRAIL  
SECTION DETAILS



LOCATE DIRECTIONAL SIGN AT TRAIL EDGE.  
SIGNS APPROX. 4.5 FT. HT., ATTACHED  
TO SALVAGED WOOD OR RECYCLED  
PLASTIC POST

PROTOCOL OR HAZARD SIGN  
(SEE SECTIONS THIS SHEET)

**1 TYPICAL DIRECTIONAL SIGNAGE**  
NT.S.

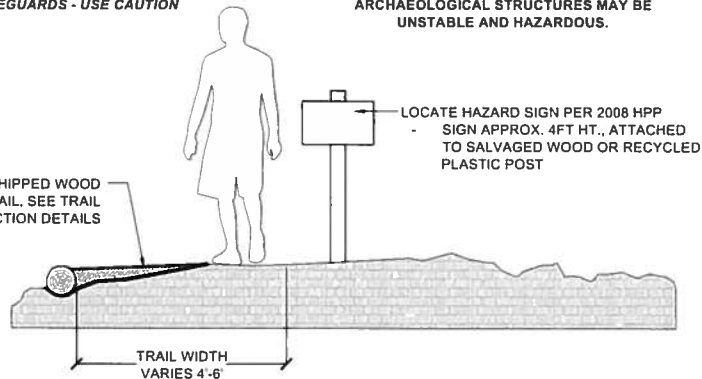
**SUGGESTED HAZARD SIGN TEXT (SHORELINE)**

**HAZARDOUS COASTLINE**  
  
**HIGH BREAKING WAVES**  
**STEEP CLIFFS**  
**SLIPPERY ROCKS**  
**STRONG CURRENTS**  
  
**NO LIFEGUARDS - USE CAUTION**

**SUGGESTED HAZARD SIGN TEXT (INLAND)**

**WARNING**  
  
**STAY ON TRAIL**  
  
**STAY OUT OF CAVES AND CRACKS**  
  
**LAVA SURFACES AND SOME  
ARCHAEOLOGICAL STRUCTURES MAY BE  
UNSTABLE AND HAZARDOUS.**

CHIPPED WOOD  
TRAIL. SEE TRAIL  
SECTION DETAILS



LOCATE HAZARD SIGN PER 2008 HPP  
SIGN APPROX. 4 FT. HT., ATTACHED  
TO SALVAGED WOOD OR RECYCLED  
PLASTIC POST

**3 TYPICAL HAZARD SIGNAGE**  
NT.S.

HPP SIZE TRAIL LINE FOR 11"x17"  
 Fr. 19 May 2017 11:50am  
 V:\P\2017\Landscaping\PROJECTS\HAWAII\Shoreline Park\KID SHEETS\Access Parking Lot\Access Parking Lot - Trail Detail.dwg