

Trim: 22"x36"



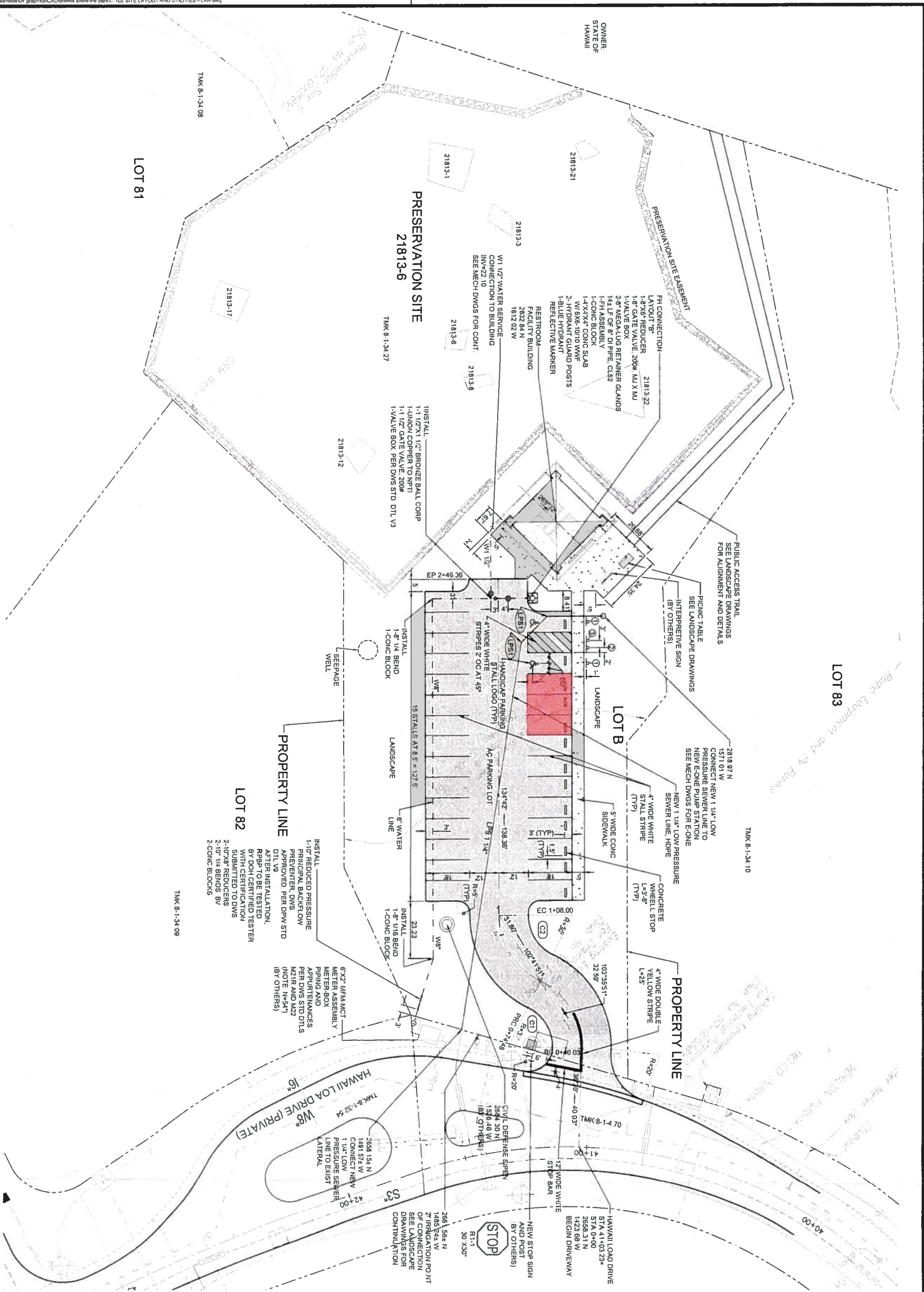
SITE LAYOUT AND UTILITIES PLAN

SCALE: 1"=20'

EXHIBIT A

© Copyright 2017, Bell Collins. All Rights Reserved

SHEET C-102 of 9 Sheets



LEGEND:

- PROPERTY LINE
- EASEMENT
- LIMITS OF GRADING
- AC PAVEMENT
- CONCRETE PAVEMENT
- NEW HANDICAP SIGN AND POST (BY OTHERS)
- RESERVED PARKING
- NEW HANDICAP PARKING SIGN AND POST (BY OTHERS)
- NOTICE RESERVED-TOW 12"x18"
- NEW HANDICAP ACCESS AISLE SIGNS AND POST (BY OTHERS)
- ACCESSIBLE AISLE 12"x18"
- 1 1/4" 1/8 BEND HOPE PIPE (BS)
- NEW STOP SIGN AND POST (BY OTHERS)
- NEW HANDICAP SIGN AND POST (BY OTHERS)
- RESERVED PARKING 12"x18" PSL
- NOTICE RESERVED-TOW 12"x18"
- NEW HANDICAP ACCESS AISLE SIGNS AND POST (BY OTHERS)
- ACCESSIBLE AISLE 12"x18"
- 1 1/4" 1/8 BEND HOPE PIPE (BS)

CL CURVE DATA

CURVE	DELTA	R	TANGENT	CH	L
(C1)	65.4818°	30.00'	19.41'	32.59'	31.48'
(C2)	64.0018°	30.00'	18.75'	31.80'	33.51'

GRAPHIC SCALE

SCALE IN FEET

0 20 40

Client: 1250 OCEANSIDE LLC
 2280 DOUGLAS BOULEVARD, SUITE 240
 ROSEVILLE, CA 95661

SHORELINE PARK PARKING AND RESTROOM FACILITY

HOKULIA

SITE LAYOUT AND UTILITIES PLAN

Designed By: AMK
 Drawn By: ACR
 Checked By: ACR
 Approved By: ACR

Date: OCTOBER 30, 2017

Consultant: BELT COLLINS
 PLANNING + CIVIL ENGINEERING
 LANDSCAPE ARCHITECTURE
 ENVIRONMENTAL CONSULTING

Bell Collins Hawaii LLC
 2155 North King Street, Suite 200
 HONOLULU, HI 96815
 T: 808.551.5261 F: 808.538.7818
 www.bellcollins.com

APRIL 30 2018
 LICENSED PROFESSIONAL ENGINEER
 No. 7533-C
 HAWAII, U.S.A.

THE WORK WAS PREPARED BY ME OR UNDER MY SUPERVISION AND CONTROL AND I AM A LICENSED PROFESSIONAL ENGINEER IN THE STATE OF HAWAII. I AM NOT PROVIDING ANY GUARANTEE OR WARRANTY FOR THIS WORK.

AMK RAO
 LICENSED PROFESSIONAL ENGINEER
 No. 7533-C
 HAWAII, U.S.A.



FRONT VIEW
 OPTION A
 Scale: 3/4" = 1'-0"



FRONT VIEW
 OPTION B
 Scale: 3/4" = 1'-0"



FRONT VIEW
 OPTION C
 Scale: 3/4" = 1'-0"

Materials

Panel: 1/4" Aluminum: beveled edges, painted
Copy 1: 3M Scotchlite
Copy 2: 3M Scotchlite
Post: 2-1/2" Round aluminum tube with beveled cap, painted

Colors

Panel: MP New #3 (with clear coat)
Copy 1: White Reflective
Copy 2: White Reflective
Post: MP New #3 (with clear coat)

Types/Styles

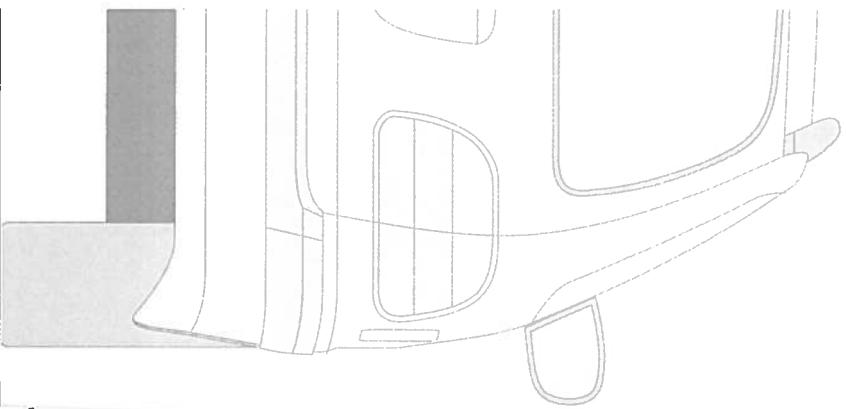
Copy 1 & 2: Gill Sans Condensed Regular

Letter Heights

Copy 1: 2-1/2"
Copy 2: 2"

Notes

1. Order Break-Aways for soil and concrete



SCOTT | AG
SCOTT AG, LLC
ENVIRONMENTAL GRAPHICS
1275 NORTH DUTTON AVENUE
SANTA ROSA, CALIFORNIA 95401
SCOTTAG.COM 707.543.4519

Hōkūliā

SHORELINE PARK
KONA, HAWAII
#5167-202

ISSUE/REVISION
12/22/2017 AD

PHASE
Design Development

SIGN TYPE

eRc
Reserved Parking Sign

SHEET

e7.0-0