

VICINITY MAP

MAP SHOWING CONSIDERATION OF LOT 17 OF COFFEE FARM LOTS, SECTION 1; LOT 1-A (REVISED) AND LOT 1-C (REVISED)

Being the whole of Lot 17 of Coffee Farm Lots, Section 1, and Portions of P.P. Certificate of Survey No. 111, R.P. 4197, L.C. No. 8559 to C. Kamao and Grant 687 to P. Conway

AND RESUBDIVISION INTO LOTS 17-A, 17-A-1 AND 17-A-2 At Keaunou, Kaaunou, and 2nd, Kapunoua, Hawaii, in the County of Hawaii, State of Hawaii

INSET 1

INSET 2

INSET 3

INSET 4

INSET 5

INSET 6

INSET 7

INSET 8

INSET 9

INSET 10

INSET 11

INSET 12

INSET 13

INSET 14

INSET 15

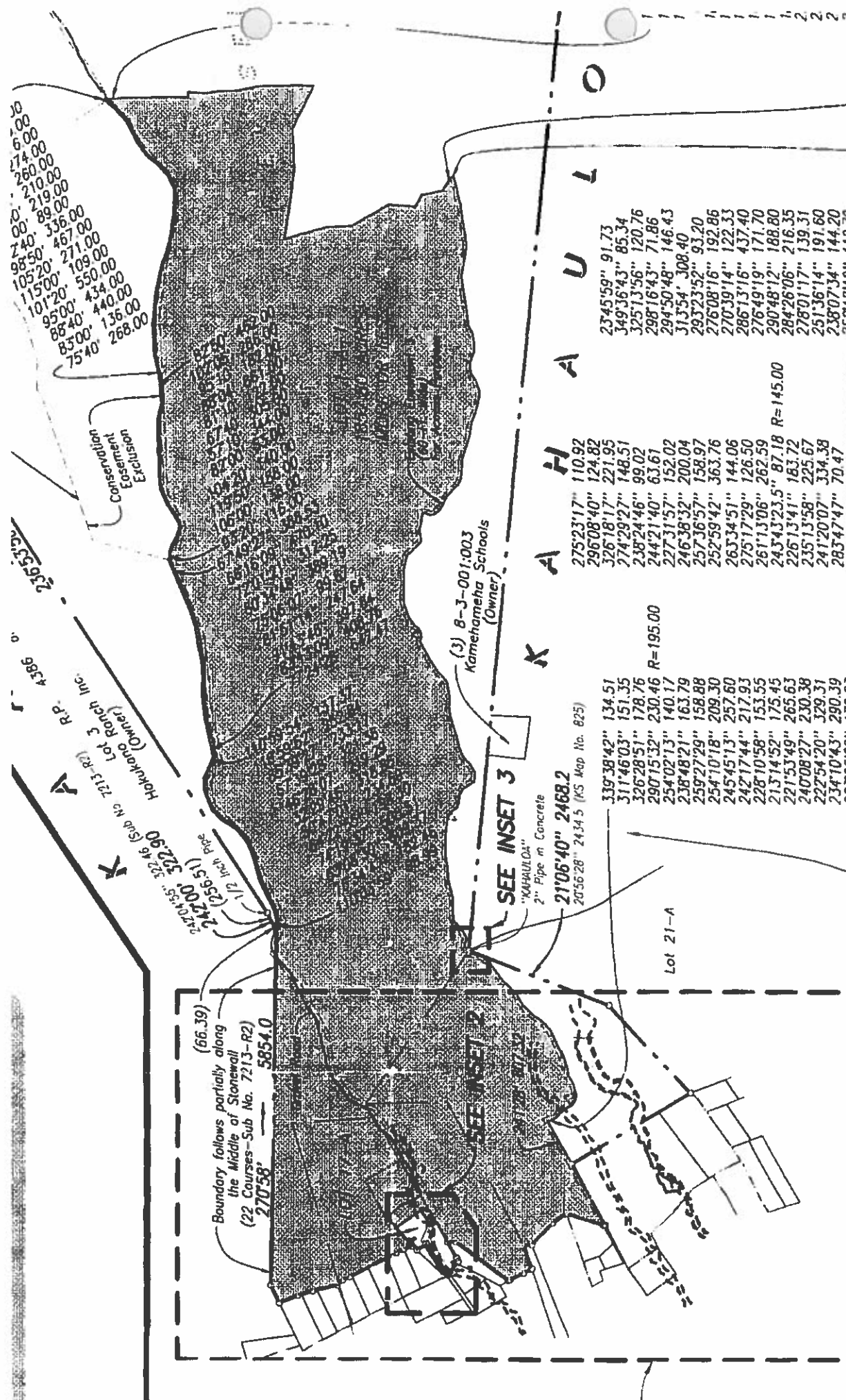
NOTES:
 1. The area shown on this map is the same as that shown on the map of the same title filed for record in the Office of the County Clerk of Hawaii, Honolulu, Hawaii, on the 15th day of May, 1950.
 2. The area shown on this map is the same as that shown on the map of the same title filed for record in the Office of the County Clerk of Hawaii, Honolulu, Hawaii, on the 15th day of May, 1950.
 3. The area shown on this map is the same as that shown on the map of the same title filed for record in the Office of the County Clerk of Hawaii, Honolulu, Hawaii, on the 15th day of May, 1950.
 4. The area shown on this map is the same as that shown on the map of the same title filed for record in the Office of the County Clerk of Hawaii, Honolulu, Hawaii, on the 15th day of May, 1950.
 5. The area shown on this map is the same as that shown on the map of the same title filed for record in the Office of the County Clerk of Hawaii, Honolulu, Hawaii, on the 15th day of May, 1950.
 6. The area shown on this map is the same as that shown on the map of the same title filed for record in the Office of the County Clerk of Hawaii, Honolulu, Hawaii, on the 15th day of May, 1950.
 7. The area shown on this map is the same as that shown on the map of the same title filed for record in the Office of the County Clerk of Hawaii, Honolulu, Hawaii, on the 15th day of May, 1950.
 8. The area shown on this map is the same as that shown on the map of the same title filed for record in the Office of the County Clerk of Hawaii, Honolulu, Hawaii, on the 15th day of May, 1950.
 9. The area shown on this map is the same as that shown on the map of the same title filed for record in the Office of the County Clerk of Hawaii, Honolulu, Hawaii, on the 15th day of May, 1950.
 10. The area shown on this map is the same as that shown on the map of the same title filed for record in the Office of the County Clerk of Hawaii, Honolulu, Hawaii, on the 15th day of May, 1950.
 11. The area shown on this map is the same as that shown on the map of the same title filed for record in the Office of the County Clerk of Hawaii, Honolulu, Hawaii, on the 15th day of May, 1950.
 12. The area shown on this map is the same as that shown on the map of the same title filed for record in the Office of the County Clerk of Hawaii, Honolulu, Hawaii, on the 15th day of May, 1950.
 13. The area shown on this map is the same as that shown on the map of the same title filed for record in the Office of the County Clerk of Hawaii, Honolulu, Hawaii, on the 15th day of May, 1950.
 14. The area shown on this map is the same as that shown on the map of the same title filed for record in the Office of the County Clerk of Hawaii, Honolulu, Hawaii, on the 15th day of May, 1950.
 15. The area shown on this map is the same as that shown on the map of the same title filed for record in the Office of the County Clerk of Hawaii, Honolulu, Hawaii, on the 15th day of May, 1950.

Prepared by the Surveyor General of Hawaii, Honolulu, Hawaii, on the 15th day of May, 1950.

Surveyed by the Surveyor General of Hawaii, Honolulu, Hawaii, on the 15th day of May, 1950.

Recorded in the Office of the County Clerk of Hawaii, Honolulu, Hawaii, on the 15th day of May, 1950.

Filed for record in the Office of the County Clerk of Hawaii, Honolulu, Hawaii, on the 15th day of May, 1950.



75°40' 268.00
 83°00' 440.00
 88°40' 550.00
 95°00' 109.00
 101°20' 271.00
 115°00' 336.00
 105°20' 467.00
 98°50' 336.00
 240' 89.00
 260' 219.00
 274' 210.00
 280' 260.00
 290' 310.00

National
 Consent
 Extension

236°53'00" 4386.0
 Hakakona Ranch Inc. (Owner)
 Lot 3 R.P. 4386
 242°00' 322.90
 247°15' 322.46 (Scale No. 7213-R2)
 256°51' 1/2 inch P.C.

(S) 8-3-001:003
 Kamehameha Schools
 (Owner)

(66.39)
 Boundary follows partially along
 the Middle of Stonewall
 (22 Courses-Sub No. 7213-R2)
 270°58' 5854.0

SEE INSET 3
 "KAHAULOA"
 2" Pipe in Concrete
 21°06'40" 2468.2
 20°56'28" 2434.5 (KS Map No. 825)

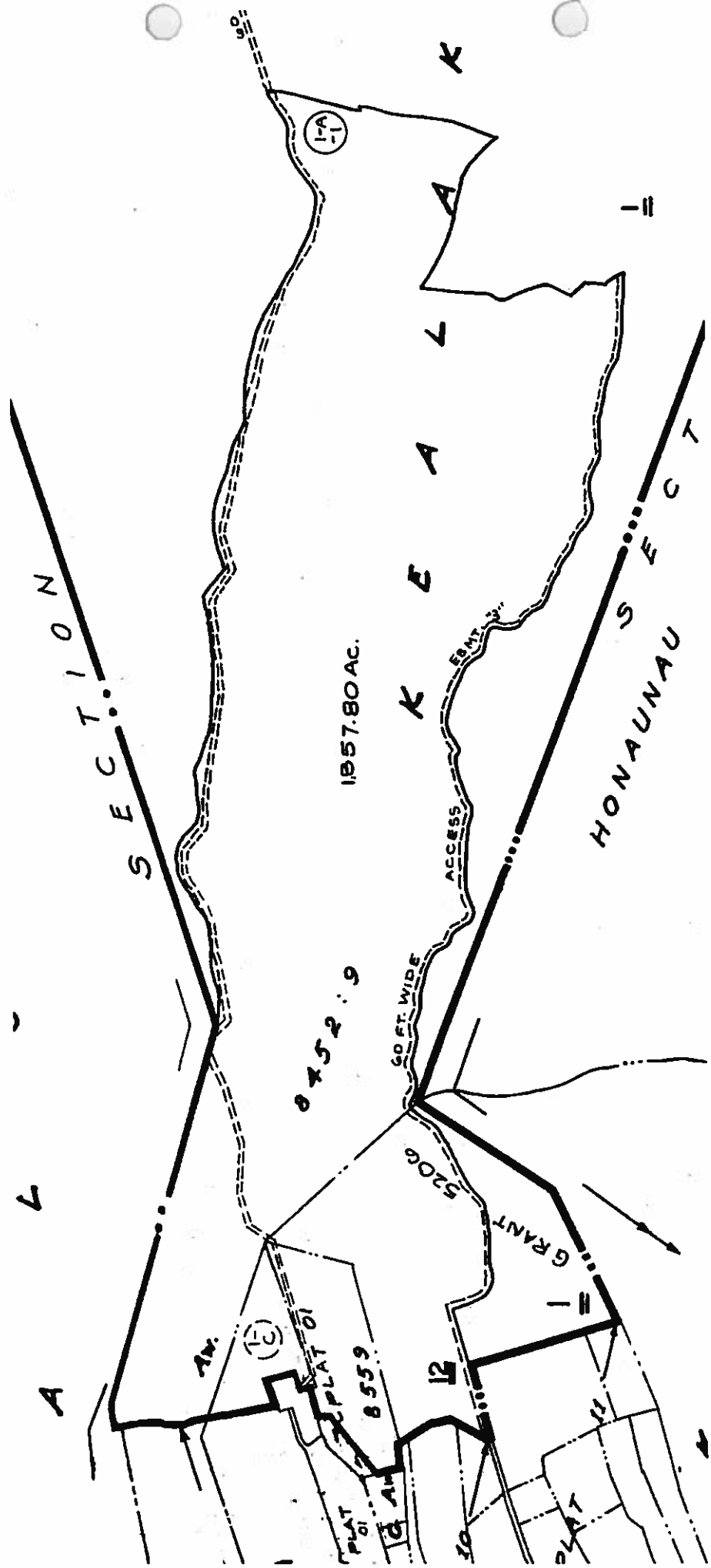
339°38'42" 134.51
 311°46'03" 151.35
 326°28'51" 178.76
 290°15'32" 250.46 R=195.00
 254°02'13" 140.17
 238°48'21" 163.79
 259°27'29" 158.88
 254°10'18" 209.30
 245°45'13" 257.60
 242°17'44" 217.93
 228°10'58" 153.55
 215°14'52" 175.45
 221°53'49" 265.63
 240°08'27" 230.38
 222°54'20" 329.31
 234°10'43" 290.39

Lot 21-A

K A H A U L O

23°45'59" 91.73
 349°36'43" 85.34
 325°13'56" 120.76
 298°16'43" 71.86
 294°50'48" 146.43
 313°54' 308.40
 293°23'52" 93.20
 276°08'16" 192.86
 270°39'14" 122.33
 286°13'16" 437.40
 276°49'19" 171.70
 290°48'12" 188.80
 284°26'06" 216.35
 278°01'17" 139.31
 251°36'14" 191.60
 238°07'34" 144.20
 252°10'10" 112.76

R=145.00



SECTION

K E A L A K

HONAUNAU

1,957.80 AC.

8452.9

60 FT. WIDE

ACCESS

5206

GRANT

(1-A)

(B)

8559

PLAT 01

PLAT 01

PLAT

A

L

T

S

E

C

T

S

E

C

T

S

E

C

T

S

E

C

T